

Update WinCE image to ROM

-Note:

1. Format Micro SD card to **FAT32**.

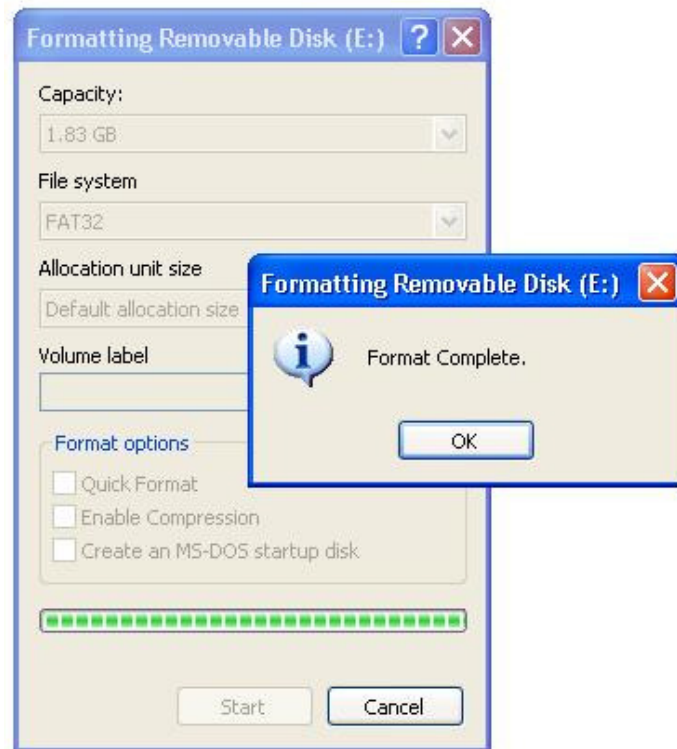


Figure 1.

2. Make sure the Micro SD card is **cleanly**.

- Steps – Update image to ROM:

1. Go to the image folder and find the file “**MLO**” and copy it to Micro SD card.

※ The “MLO” must be the **first** file what you copy it to Micro SD card.

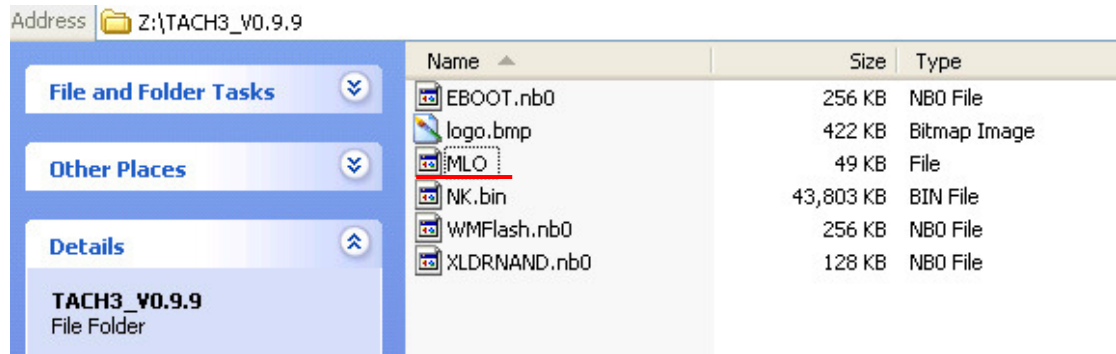


Figure 2.

2. Find the file “**WMFlash.nb0**” at the image folder and copy it to Micro SD card.

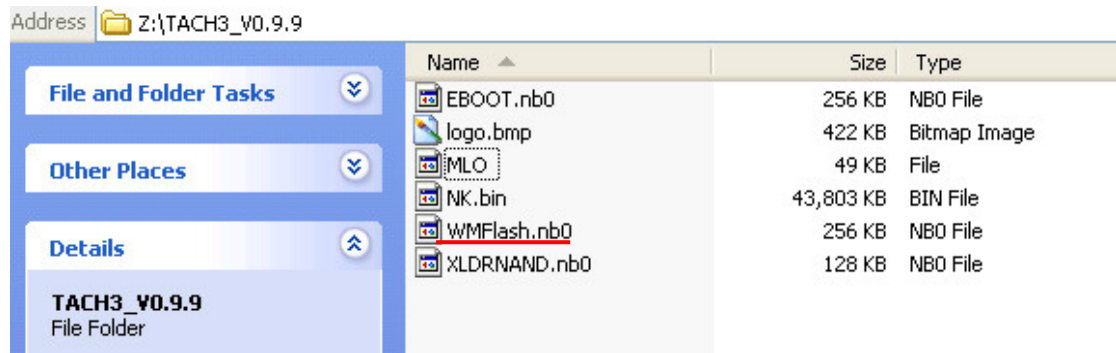


Figure 3.

3. Find the file “**logo.bmp**” at the image folder and copy it to Micro SD card.

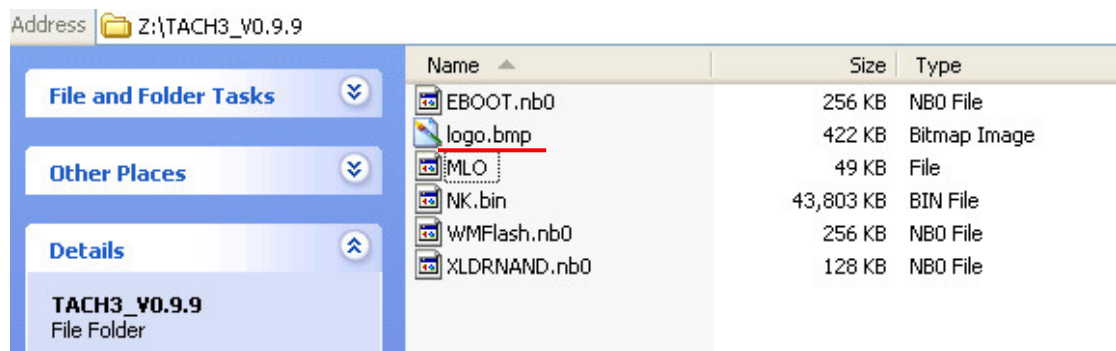


Figure 4.

4. Find the file “**XLDRNAND.nb0**” at the image folder and copy it to Micro SD card.

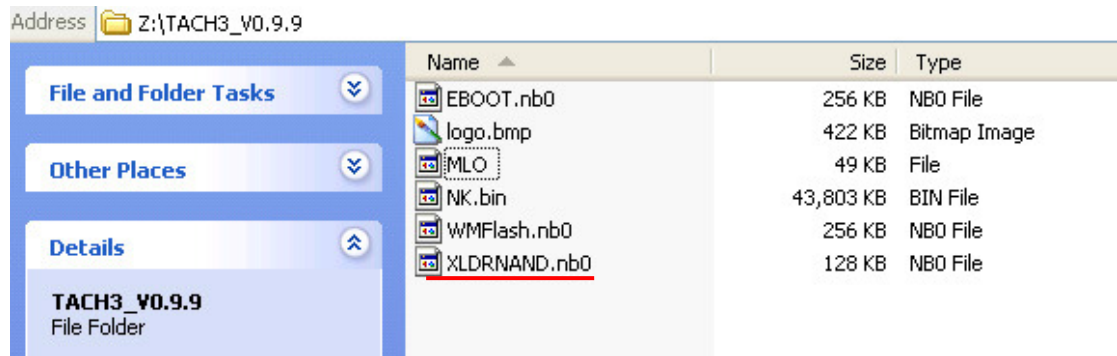


Figure 5.

5. Find the file “**EBOOT.nb0**” at the image folder and copy it to Micro SD card.

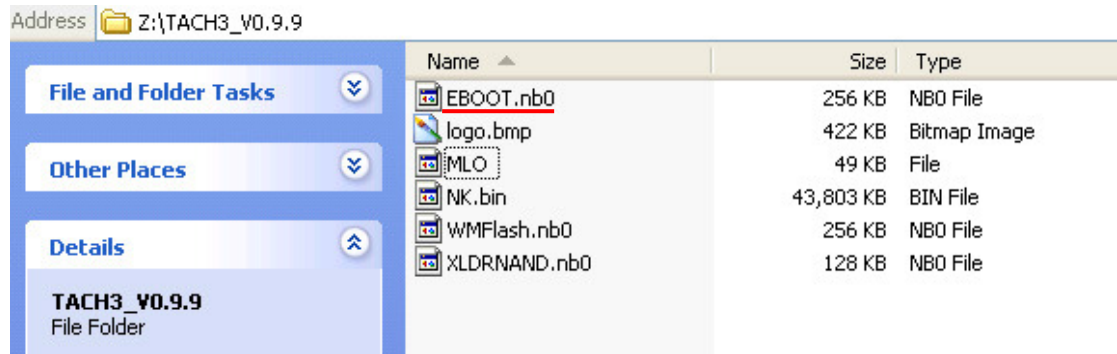


Figure 6.

6. Find the file “**NK.bin**” at the image folder and copy it to Micro SD card.

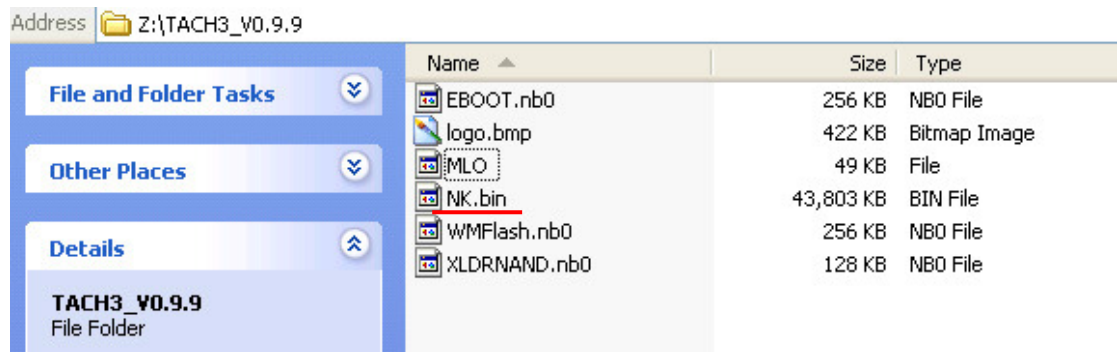


Figure 7.

7. You will see the image like Figure 8 from Micro SD card after you done step 1 to 6.

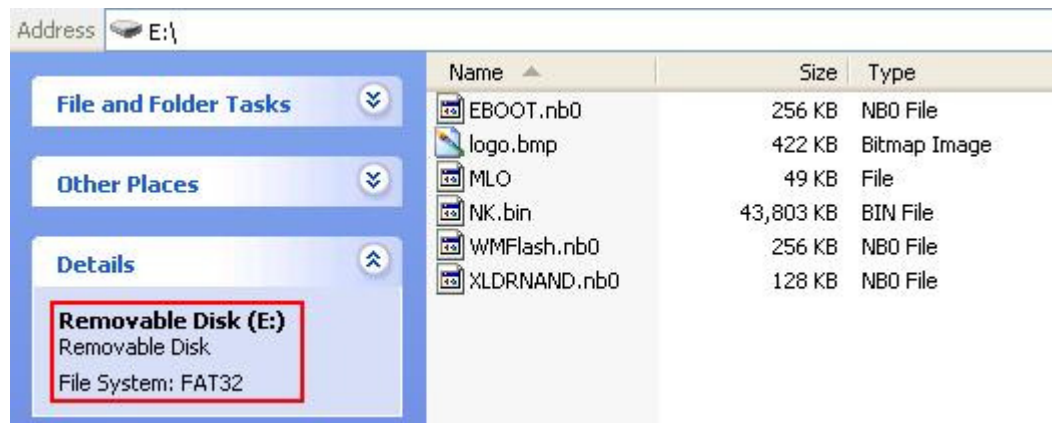


Figure 8.

❖ At WinCE in TACH3

8. Double click “My Device”

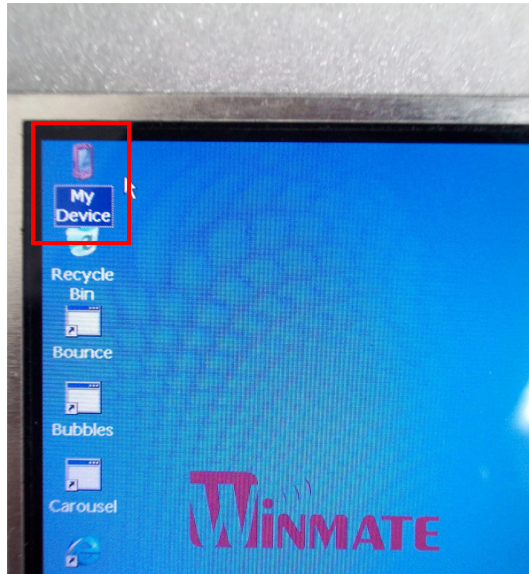


Figure 9

9. Double click “Control Panel”, and execute “Storage Manager”

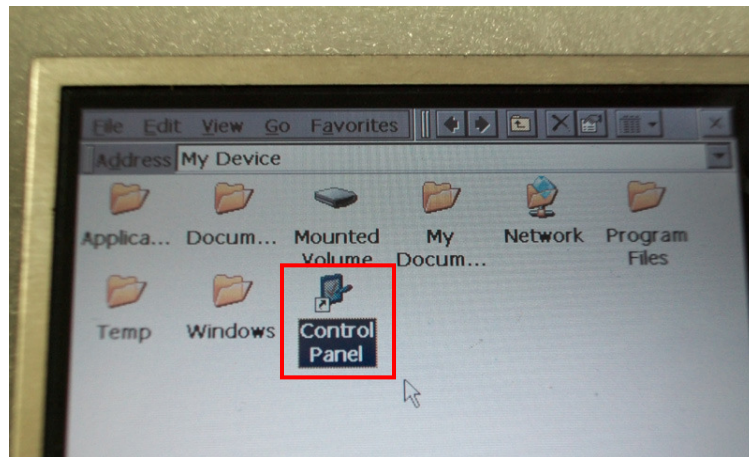


Figure 10.

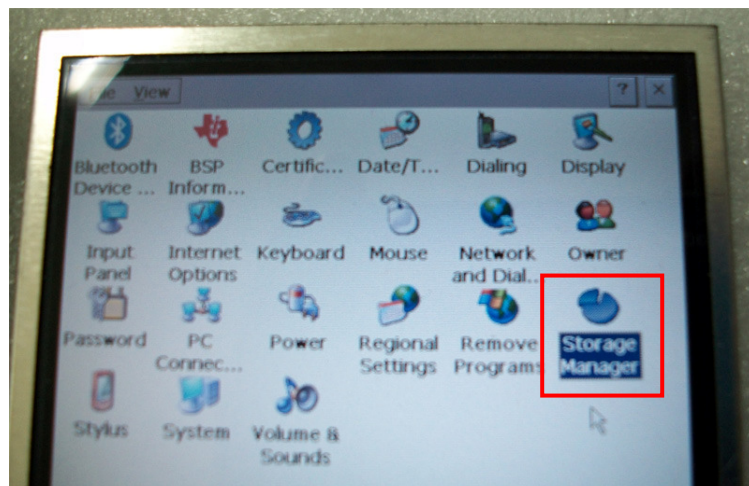


Figure 11.

10. Click “Dismount” button when you see the image like Figure 12.

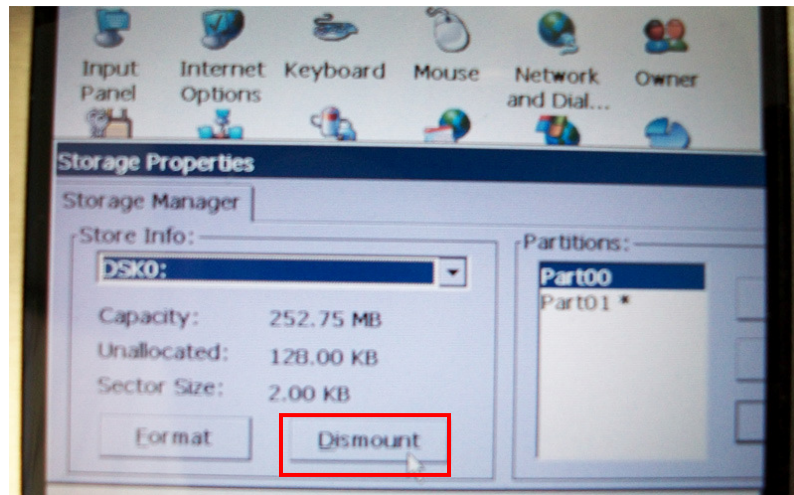


Figure 12.

11. Click “Format” button and select “OK”

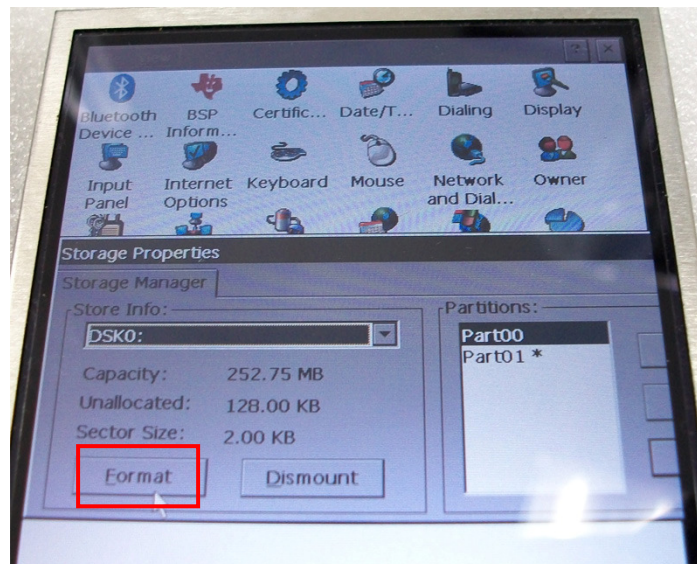


Figure 13.

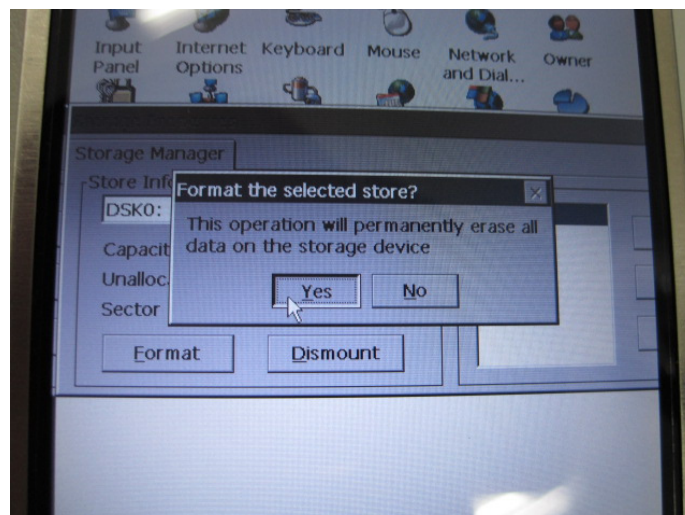


Figure 14.

12. When the screen shows a image like Figure 15, please **power off** TACH3

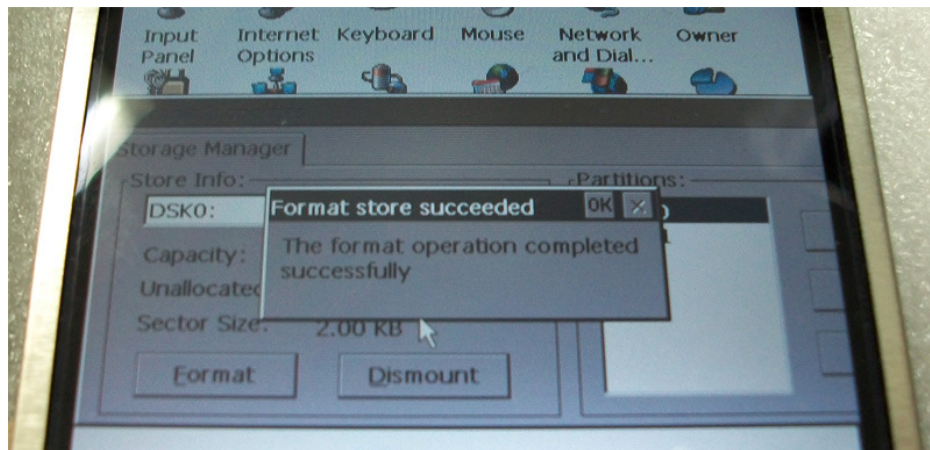


Figure 15.

13. Plug the Micro SD card in the TACH3 and power **on**.
14. The TACH3 screen will show a boot logo like Figure 16 and **start erase** ROM.



Figure 16.

15. About 20 seconds later, it will show an image like Figure 17.
It means the erase function is finish.
Then re-start TACH3.



Figure 17.

16. The screen will show an image like Figure 18, and it will start to format ROM.
After 15 seconds, the image will change to another like Figure 19, and the WinCE image is flashing now.

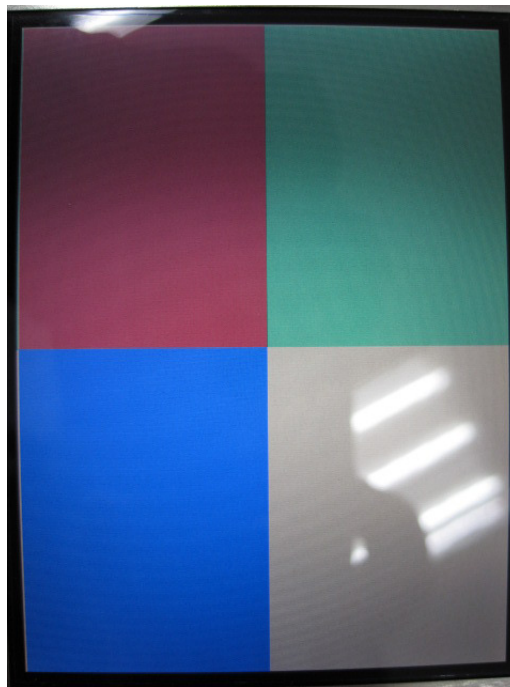


Figure 18.



Figure 19.

17. About 70 seconds, the screen will show an image like figure 20, and it means the flash function is finish.
Please re-start TACH3.



Figure 20.

18. If the screen is show an image like Figure 21, that is mean the flash function is succeed



Figure 21.

19. After WinCE boot success, it will show an image like Figure 22.

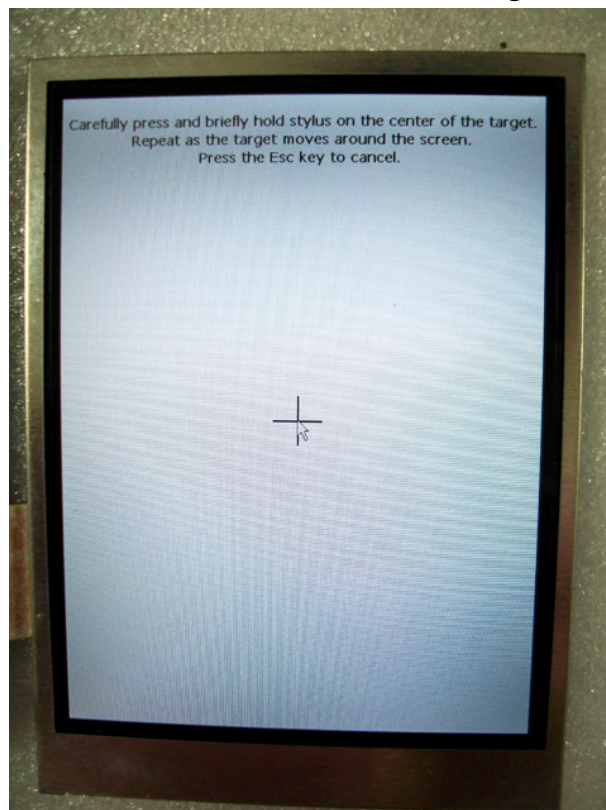


Figure 22.