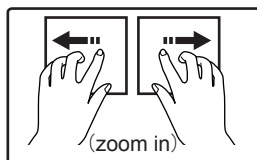
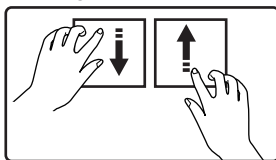


Quick Zoom In / Out ; Rotate photos

- Press the two touch pads by two fingers of each hand and drag to outer edges of pads, to [zoom in] photos.
- Press the two touch pads by two fingers of each hand and drag from outer edges to center of pads, to [zoom out] photos.



- Press the two pads by two fingers of each hand, with one finger drag from bottom to the top; and the other from top to the bottom, the photo would rotate 90 degree in the same direction.



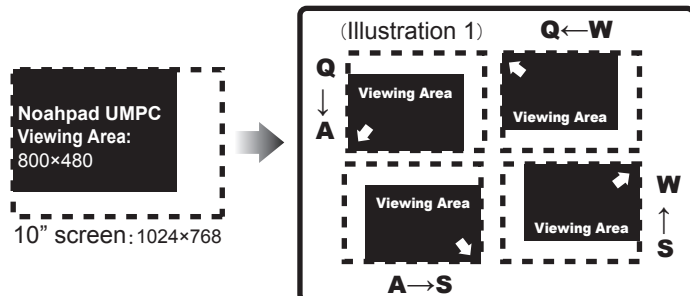
Move and browse the screen

(7" screen can provide 10" display vision)

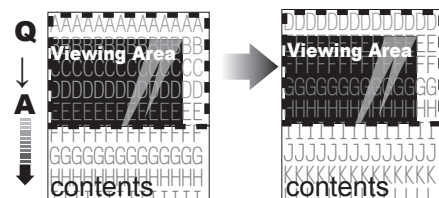
- By using [QWAS] keys, users could easily move and browse the screen.

How to use: (Example: move the screen to the left-down corner, Illustration 1)

- Press and hold on [Q] then drag to [A]; the screen would be moved to the left-down corner.



- If you would like to view the lower contents, after the above operation, please keep your finger on the pad and continuously press [A] slowly, the contents would be scrolled down slowly. Similar function could be used to drag from [Q] to [W] or [A] to [S] and slowly move the contents to the right.



- 5 -

To enable/disable CapsLock function

- Slide in below area to enable [Fx] function. (Fx function is for green functions and blue printing symbols on the touch pads)
- Press on [CapsLock], the function would be locked (similar to CapsLock of normal keyboard. CapsLock indicator would be on)



Single Upper/Lower Case Input

Definition: When user would like to input only one time upper/lower case letter, the others remain lower/upper case letters.

Operation (Example)

- Press [Shift], and do not leave your finger out of the pad.
- Press the specific letter, such as [A], then [A] could be input.



Note

- [Shift] of left pad is for use of right pad letters.
- [Shift] of right pad is for use of left pad letters.

- 6 -

Noahpad



Noahpad[®]
UMPC

Quick guide
EL-460-0001

Please reference to user guide for responsibility and safety

Simulation of Tablet PC Input Mode

- Turn over screen 360 degree. Touch pad locates on the back of the screen for the convenience of input during walking. While input, screen will show the corresponding virtual keyboard to touch pad.

Screen turned by 360°

Hand-held operation mode



360° back typing virtual keyboard on screen display

Esc	1	2	3	4	5	6	7	8	9	0	←
Fx	Q	W	E	R	T	Y	U	I	O	P	Input methods switch
Fn	A	S	D	F	G	H	J	K	L	;	Switch between current and last working windows
↑	Z	X	C	V	B	N	M	,	.	/	back Home
Switch to mouse mode	Ctrl	Alt	Alt Gr	←	→	Space	↓	↑	⬆	Enter	

Note

- For the purpose of superior portability, the design of product is based on conciseness. The size of touch style keyboard is smaller than the standard keyboard. Users will take more time to adjust the typing habit.
- The edge of touch pad has weaker sensibility. Please touch the center of keys when pressing the keys on the sides.

Emergency shutdown and reset

- when you cannot shutdown or restart computer with normal procedure described above, please hold the power button until the computer shutdown.



R6WE4600001010-00

- 7 -

Noahpad UMPC basic function and operation introduction

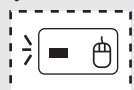
The operation interface of Noahpad UMPC is made by two touch pads with switch. It could be used as keyboard also as mouse pad. The usage is similar to normal computers, but still with some minor differences. Below are some quick guide for reference.

1. Switch between keyboard and mouse

Noahpad UMPC would switch between mouse mode and keyboard mode smartly.

- > When in mouse mode→ the mouse indicator would be on.
- > when in keyboard mode→ indicator would be off.

- Slide on the touch pad, it would be automatically switched to mouse mode; if click at the other position out of the last touch point in mouse mode, it would be switched to keyboard mode.
- To force to keyboard mode, simply press **【shift】**
- When display is turned to the back, hold the device and put your fingers on the two pads, the virtual keyboard would be shown on the screen. Put your fingers on two pads, wherever you touch, the corresponding area would be shown on the screen, and user could input the indicated letters.
- A mouse icon would appear at the left-down corner, to switch to mouse mode, simple press the mouse icon.



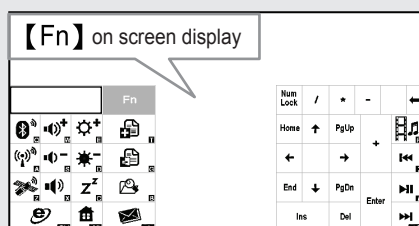
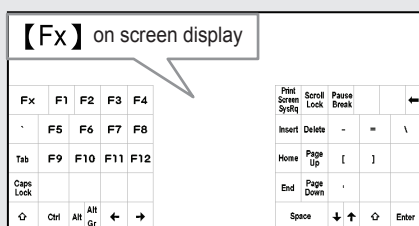
2. Operation tips of keyboard

- Special key combinations.
- For example→how to use **【Alt】 + 【F4】** :
 1. Enable **【Fx】** function
 2. Press and hold **【Alt】**
 3. Use another finger to press and hold **【F4】**
 4. Release **【Alt】**
 5. Release **【F4】**
- **Ctrl+Alt+Del**:
 1. Quickly press **【Ctrl】** **【Alt】**, then **【U】**.



To keep standard keyboard width in this small device, Noahpad hides some keys in **【Fx】** function page. To enable **【Fx】** function, slide between **【Esc】** and **【1】** or slide on **【space】** key, a **【Fx】** function page would be shown on the screen. If user keeps fingers on the pad, **【Fx】** function or symbols could be repeatedly input until all fingers had left the pads.

Slide in area **【4】** and **【5】**, would enable **【Fn】** function, and virtual **【Fn】** function page would be shown on the screen. Those functions include **【brightness adjustment】**, **【volume adjustments】** etc.....



- 1 -

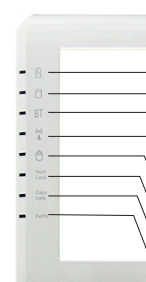
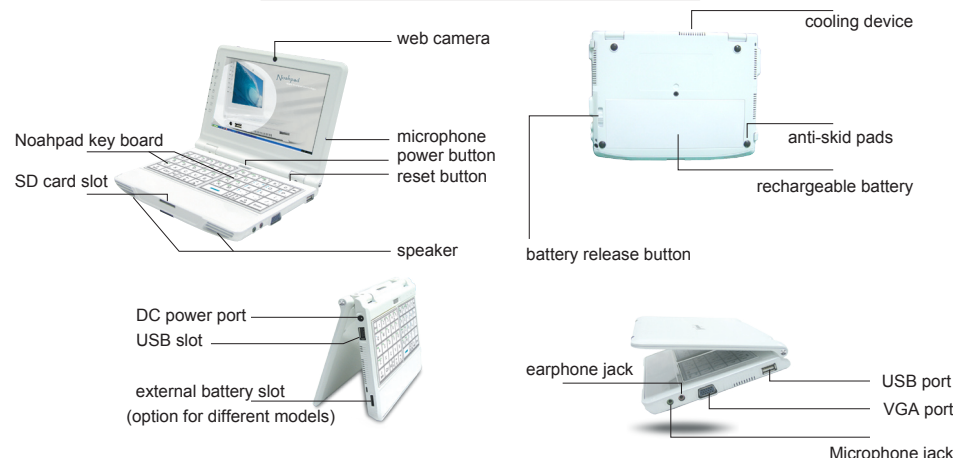
3. Operation tips for mouse mode

- Slide on the two pads would automatically switch to mouse.
- Left pad could be used for screen move when in 10" screen simulation.
- Right pad is for cursor move, like normal mouse.
 - > When slide to the preferred position and press the pad without leaving your finger, it means the left click of the mouse.
 - > To press the mouse right arrow icon at the right-down corner of left pad would execute the right button of the mouse.
 - > TIP: Sometimes Noahpad would switch to keyboard wrongly. To make sure Noahpad would not misunderstand the mouse mode click, it's better not to leave your finger out of the pad, then click.
 - > In the down-bottom of the right pad, there are two buttons for scroll up and down, just like the scroll button of the mouse.



The interface of Noahpad UMPC is not only for keyboard and mouse, there are some more special hot key functions available, please refer to the introduction of hot keys.

Outlook and light signal



- Battery charge indicator/ the light will be on when battery is charging
- Hard Disk access indicator/ the light will blink when system is reading or writing data
- Bluetooth communication indicator / the light will blink when bluetooth device is on
- Wireless network indicator/ the light will blink when wireless network device is on
- Noahpad mouse indicator / the light will be on when switching to mouse mode
- Number Lock indicator / the light will be on when number lock key is pressed
- Caps Lock indicator/ the light will be on when Caps Lock key is pressed
- [Fx] [Fn] indicator/ the light will be on when entering these two modes

- 2 -

Battery installation / Remove Battery

1. insert two latches of battery into the gutter
2. push battery down to battery gutter to complete installation



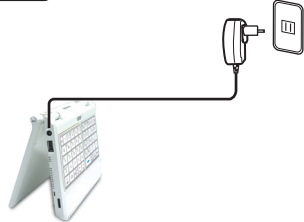
1. Please turn over the computer.
2. Push battery lock to unlock position and take off battery

unlock



Plug power

1. Connect the adaptor to computer power port
2. Plug the adaptor to power outlet



Note

- Please confirm computer is off before replacing battery
- If replacing battery when the computer is on, please make sure there are alternative power source. (eg. AC adaptor)
- Before using the computer, please install the batter and connect with AC adaptor.
- There are two power supply sources for Noahpad: battery and AC adaptor. When battery cannot provide sufficient power, please use AC adaptor instead.

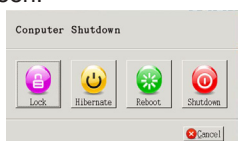
Turn on the computer

1. Turn on the computer by press the power button on Noahpad
2. Windows style management desktop appears on screen



Shutdown

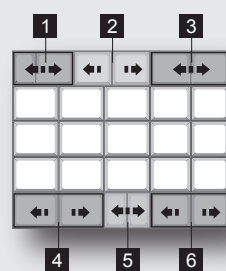
1. Click on [Start] symbol from the status bar on the bottom of the screen.
2. Click on **【U】**
3. The dialog on the right appears
4. Click on [Shutdown]



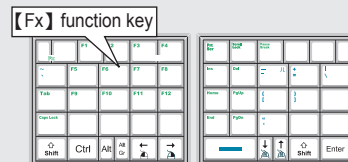
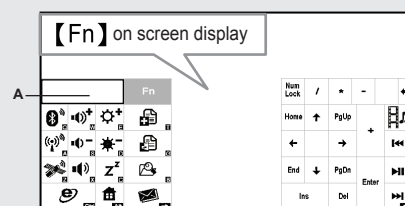
- 3 -

Touch pads Hot keys of specific functions

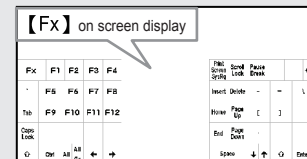
【Left touch pad】



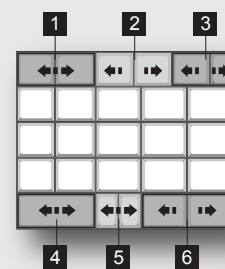
1. Hot Key : Enable **【Fx】** function, a virtual keyboard would be shown on the display (for green function keys and blue printing symbols)
How to use: (for example, execute **【F2】** function)
 1. Choose one file or directory.
 2. Slide to the left or to the right in this area to enable **【Fx】** function.
 3. Press **【F2】** to rename the file or directory.
2. Hot Key: **【Start】** menu / **【File Browser】** .
How to use: Slide from Right to Left → enable **【Start】** menu; from Left to Right → to open **【File Browser】**
3. Hot key : Enable **【Fn】** function on the screen.
How to use: Slide to the left or to the right to enable it.
4. Hot key : Input methods switch.
How to use: Slide from the left to the right → Switch to English input method. Slide from the right to the left → Switch to last non-English input method.
5. Hot key : Show desktop.
How to use: Slide to the left or to the right is to show desktop.
6. Hot key : Paste / Copy.
How to use: Slide from the left to the right → **【Paste】**
Slide from the right to the left → **【Copy】**



※ when setting up each function, the function status and settings would be shown in area A in above photo.



【Right touch pad】



1. Hot key : Switch between current and last working windows.
How to use: Slide to the left or to the right → Switch between previous and current working windows.
2. Hot key : When browsing the webpages.
How to use: Slide from the right to the left → means **【Last page】**
Slide from the left to the right → means **【Next page】**
3. Hot key : Back to **【Homepage】** / Execute **【Refresh】**
How to use: Slide from the right to the left → only valid in browser, means back to **【Homepage】**
Slide from the left to the right → only valid in browser, means **【Refresh】**
4. ※ This hot key is the same with **【Fx】** function key of left pad.
Hot Key : Enable **【Fx】** function, a virtual keyboard would be shown on the display (for green function keys and blue printing symbols)
Hot key : Enable **【Fx】** function key.
How to use: (for example, execute **【F2】** function)
 1. Choose one file or directory.
 2. Slide to the left or to the right in this area to enable **【Fx】** function.
 3. Press **【F2】** to rename the file or directory.
5. Hot Key: **【Save】**
How to use: Slide in this area (mouse scroll up/down) to execute **【Save】** function.
6. Hot Key: **【Undo】** / **【Redo】**
How to use: Slide from Right to Left is **【Undo】** ; from Left to Right is **【Redo】**

- 4 -