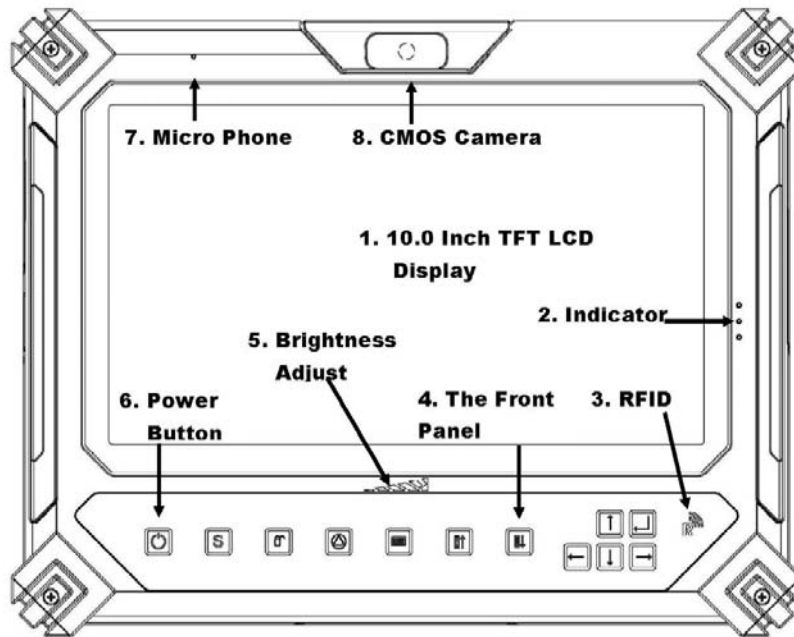


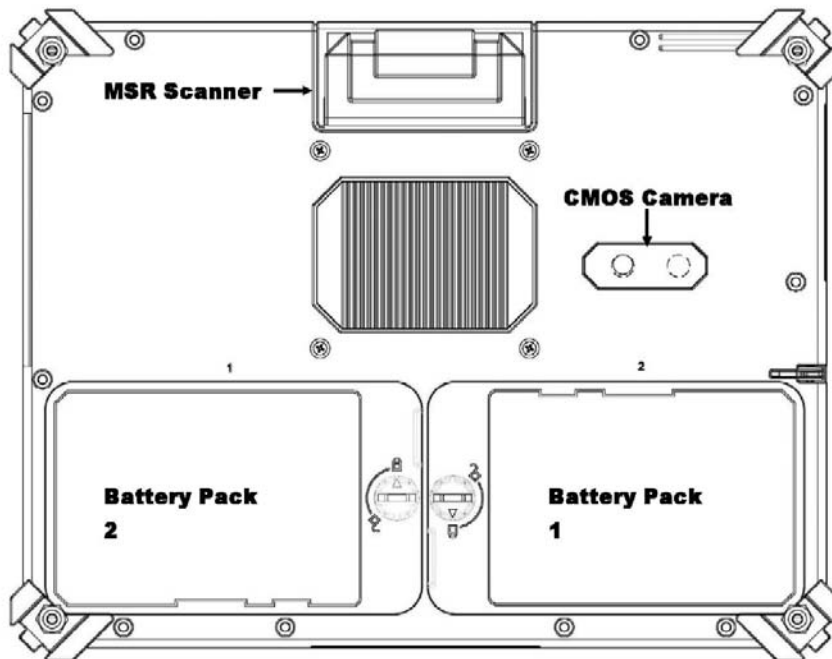
## The User's Manual of IO-10 (Simply)

### A . The appearance and the Function Guide

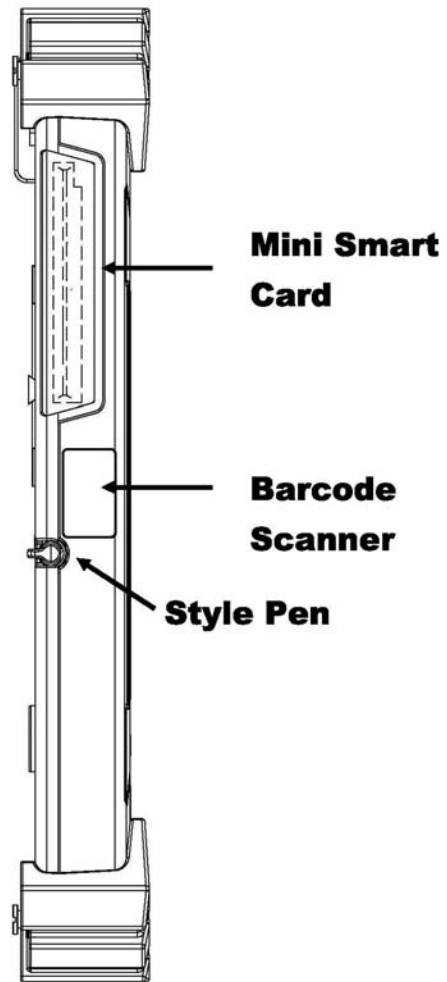
#### 1. The Front Panel View



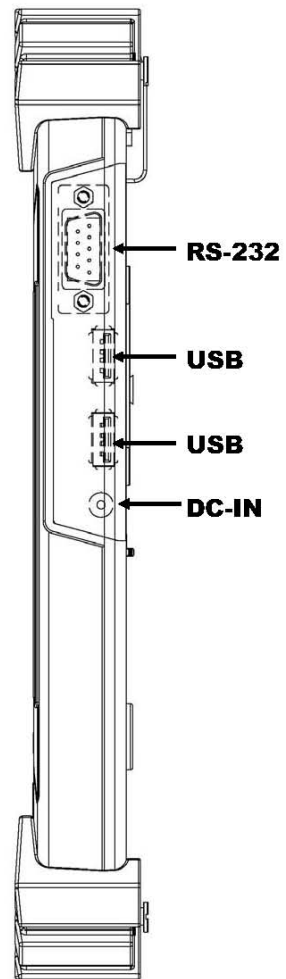
#### 2. The Rear Back View



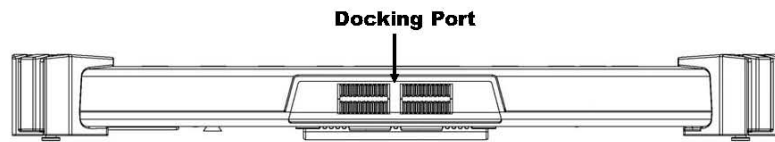
### 3. The Left side View



#### 4. The Right Side View



## 5. The Button View

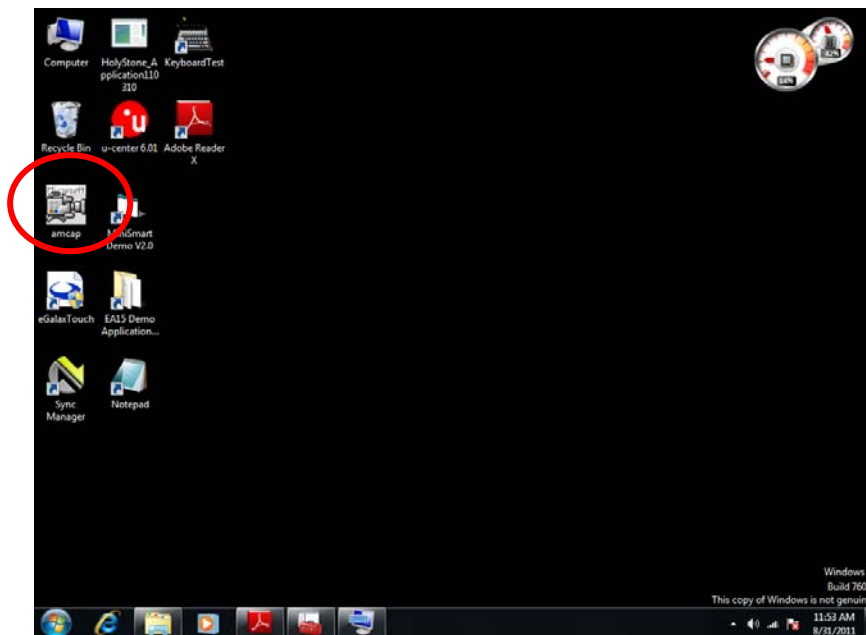


## B . The Description of the Functional

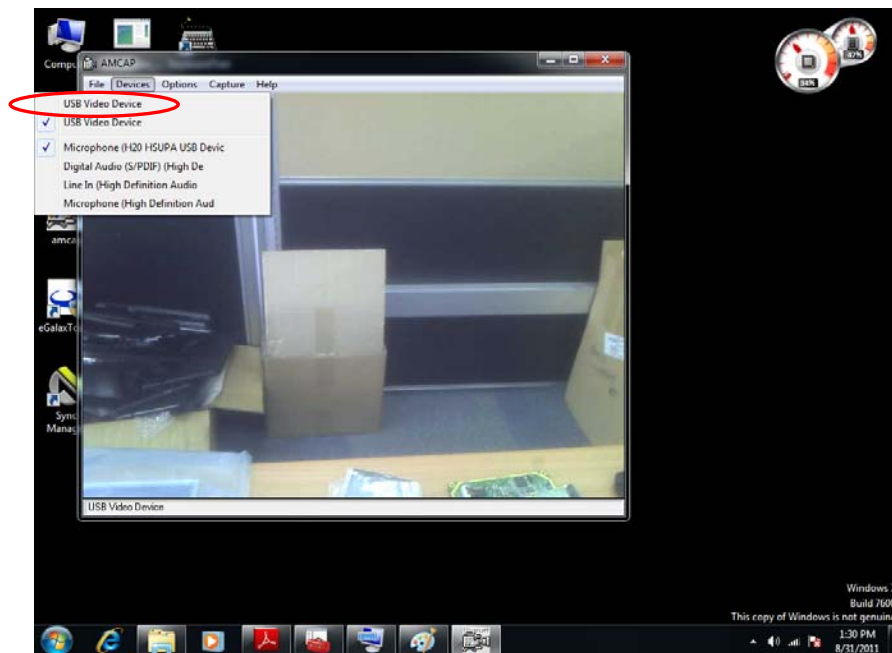
### 1. The CMOS Camera Operate

#### A. Front CCD

a.1 Select the “AMCAP “ icon as below shown ( Red circle)

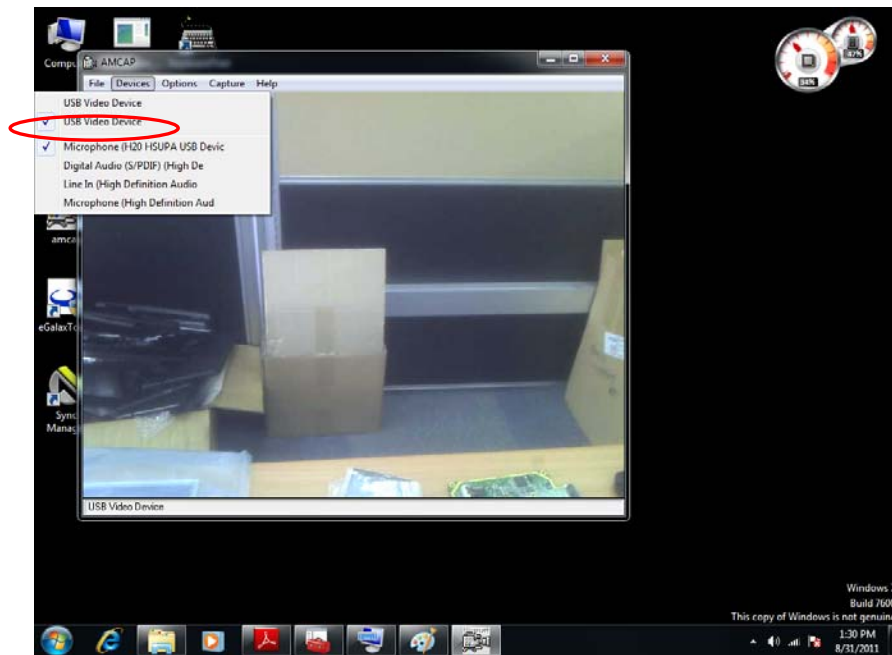


a.2 Select the “ device “ and “ USB Video Device” first Bar.  
as below shown ( Red circle)



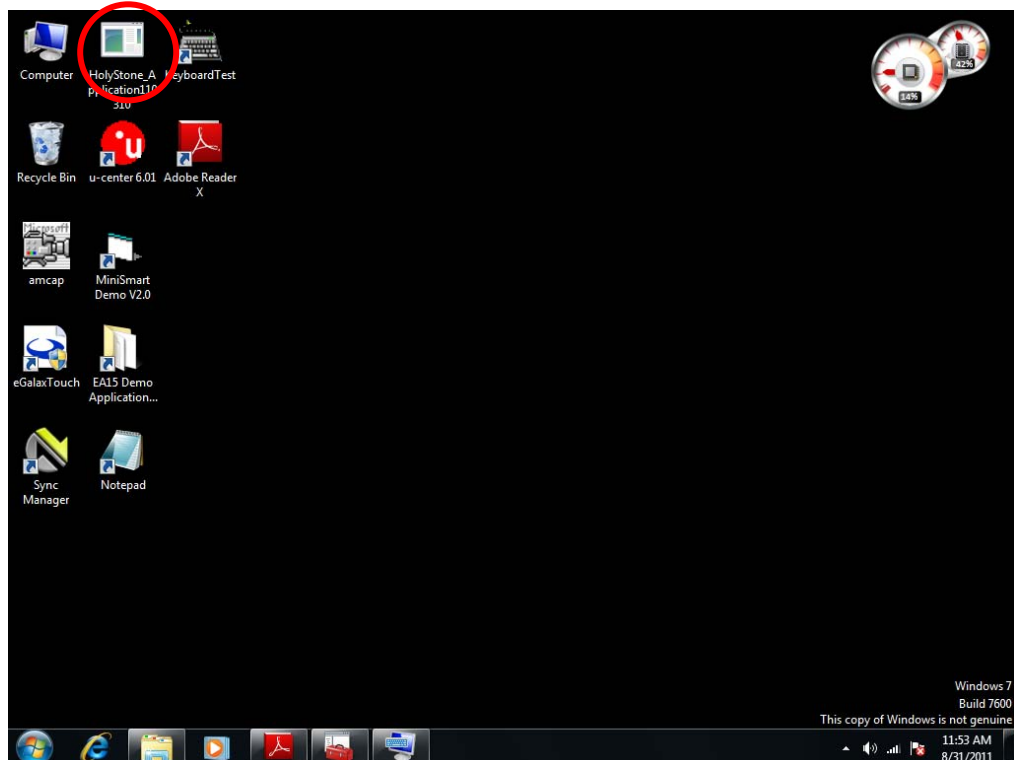
## B. Rear back CCD

b.1 Select the “ device “ and “ USB Video Device” second Bar.  
as below shown ( Red circle)



## 2. RFID Function Operate

2.1 Select the “ Holy Stone ” icon as below shown ( Red circle)



Computer HolyStone\_... KeyboardTest

Recycle Bin u-c

amcap M

eGalaxTouch EA

Sync Manager Appl

Notepad

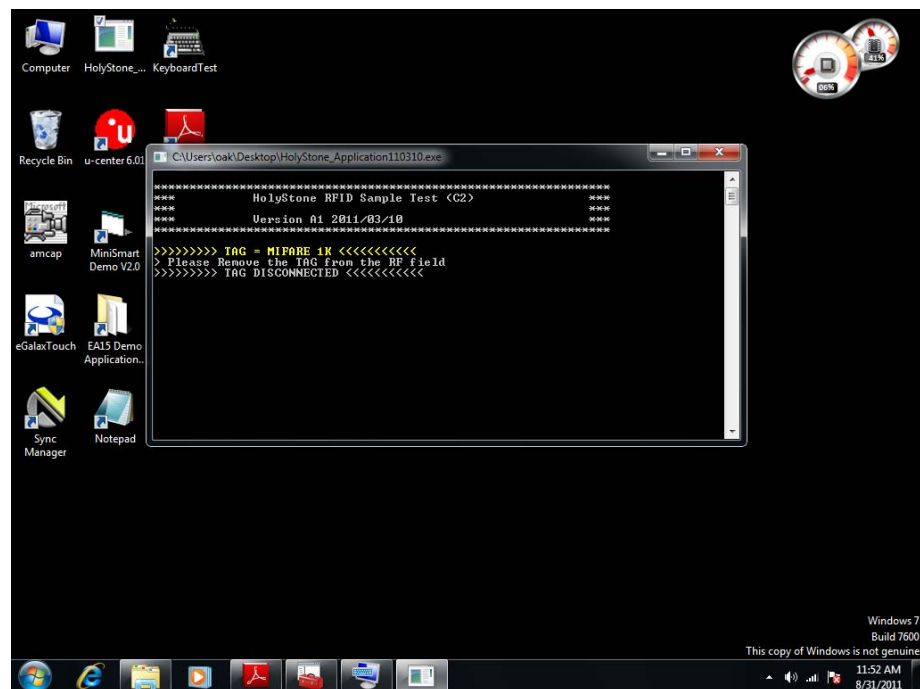
```

C:\Users\oak\Desktop\HolyStone_Application110310.exe
=====
HolyStone RFID Sample Test <C2>
Version 02 2011/03/10
=====
> Enter Select COM Port 1 ~ 6 <ex:COM1 = 1> = 3
  
```

Windows 7  
Build 7600  
This copy of Windows is not genuine

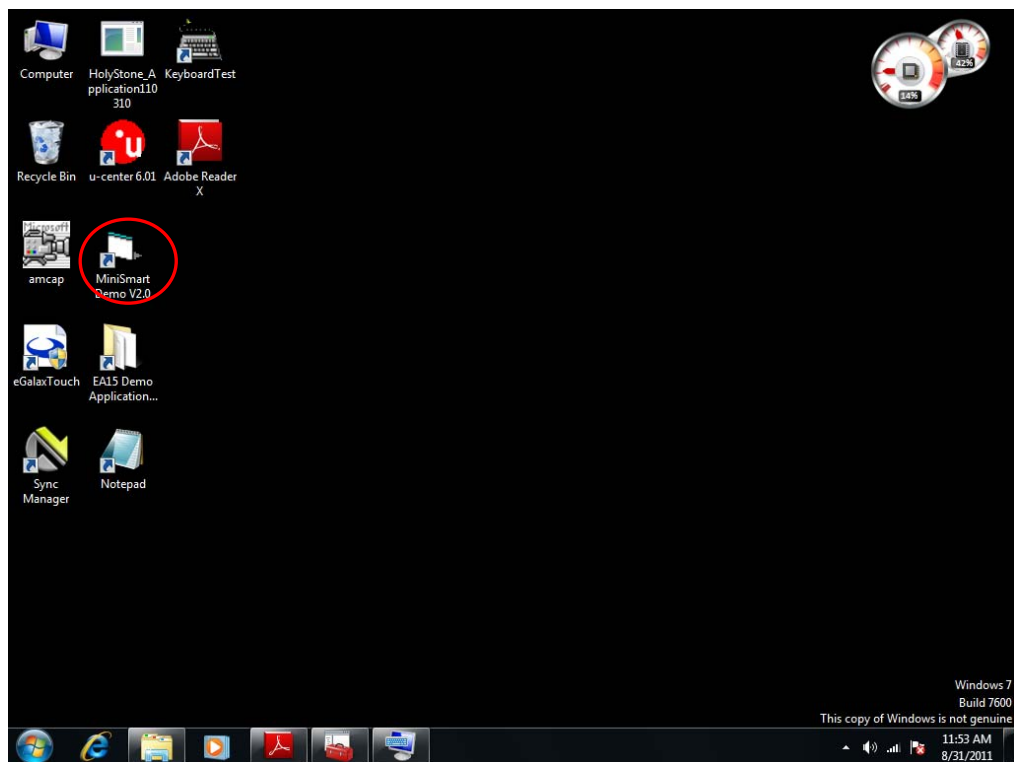
11:55 AM  
8/31/2011

If was received the data from RFID Card , It would be showing  
As below picture yellow word.

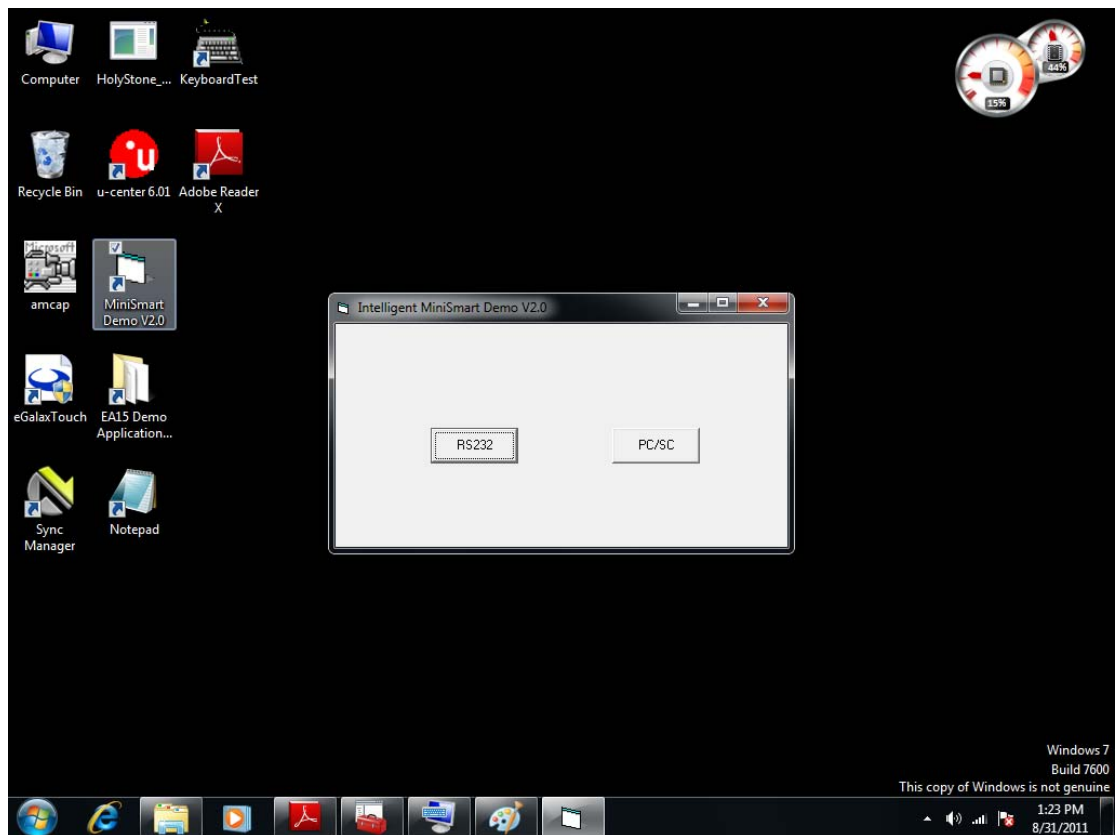


### 3. The Mini Smart Card Operate

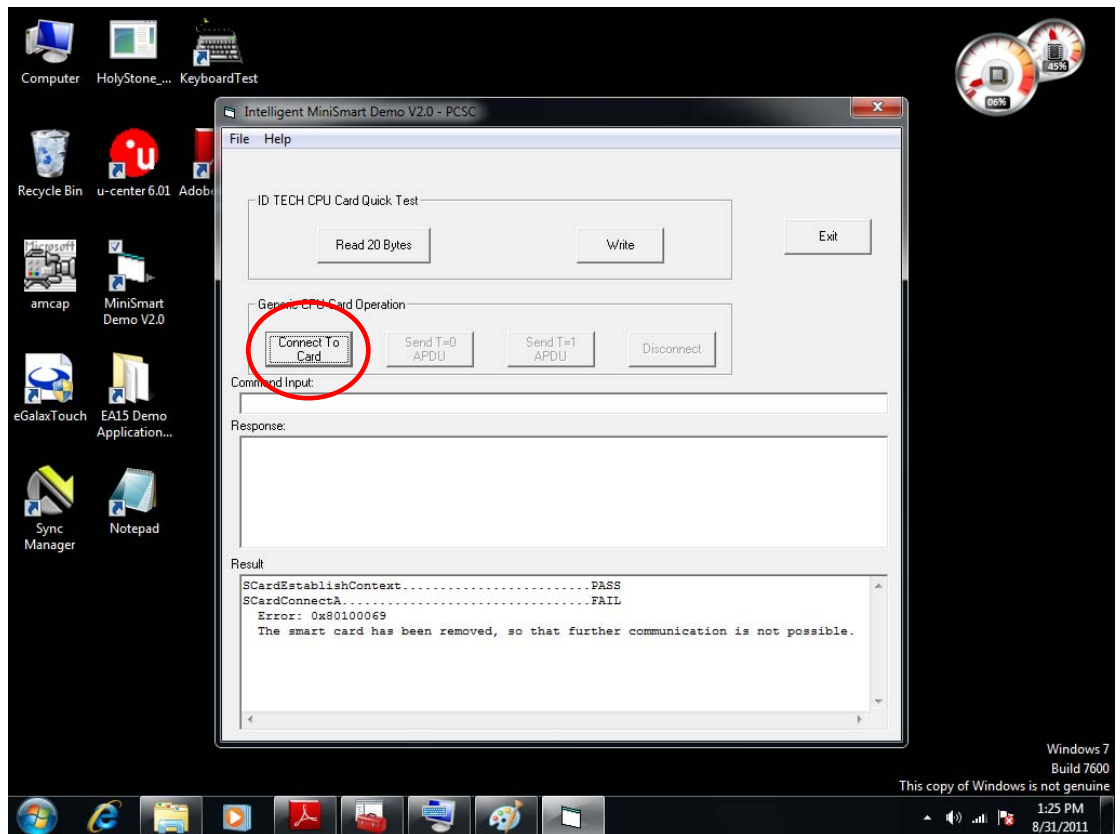
#### 3.1 Select the “ Mini Smart ” icon as below shown ( Red circle)



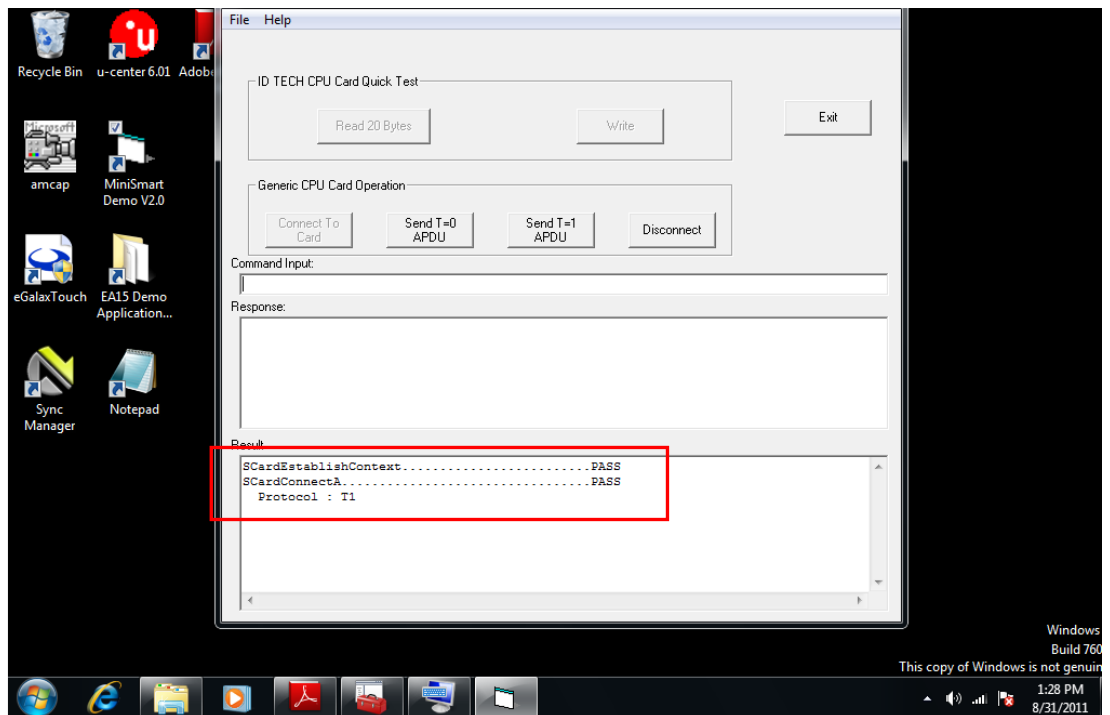
#### 3.2 To select the “ PC/SC ” button.



3.3 Inserted the Mini Smart Card to Mini Smart Card Slot.  
And to press the “ connect to Card “ button.

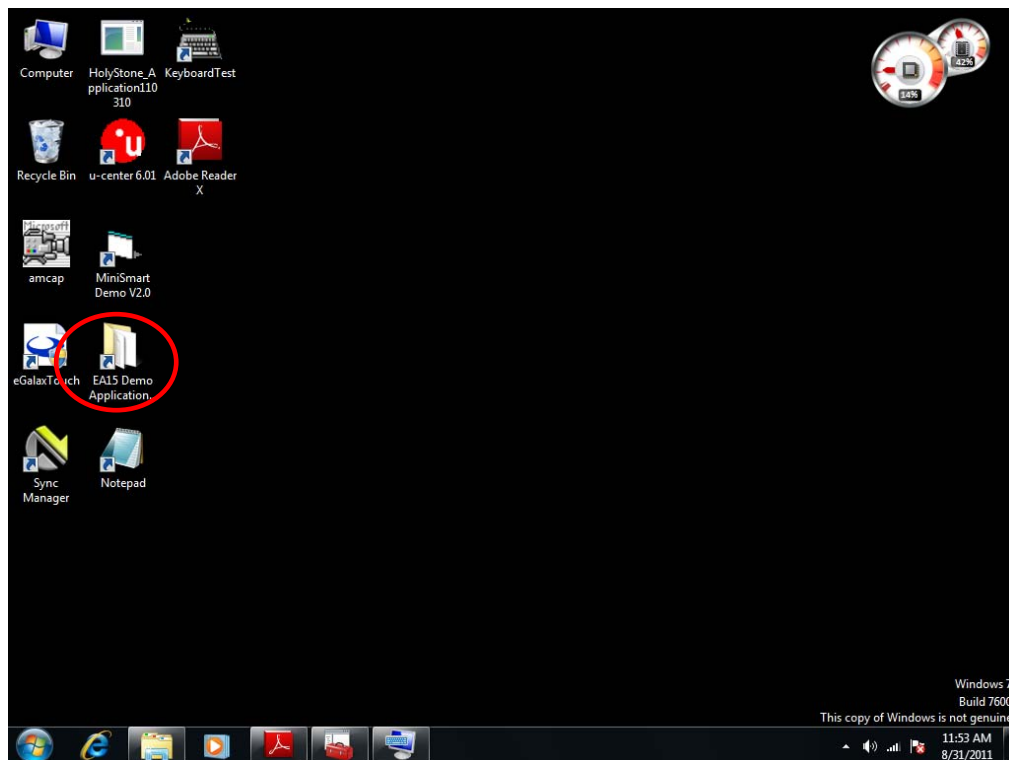


3.3 The Result Area would be showing the Data.

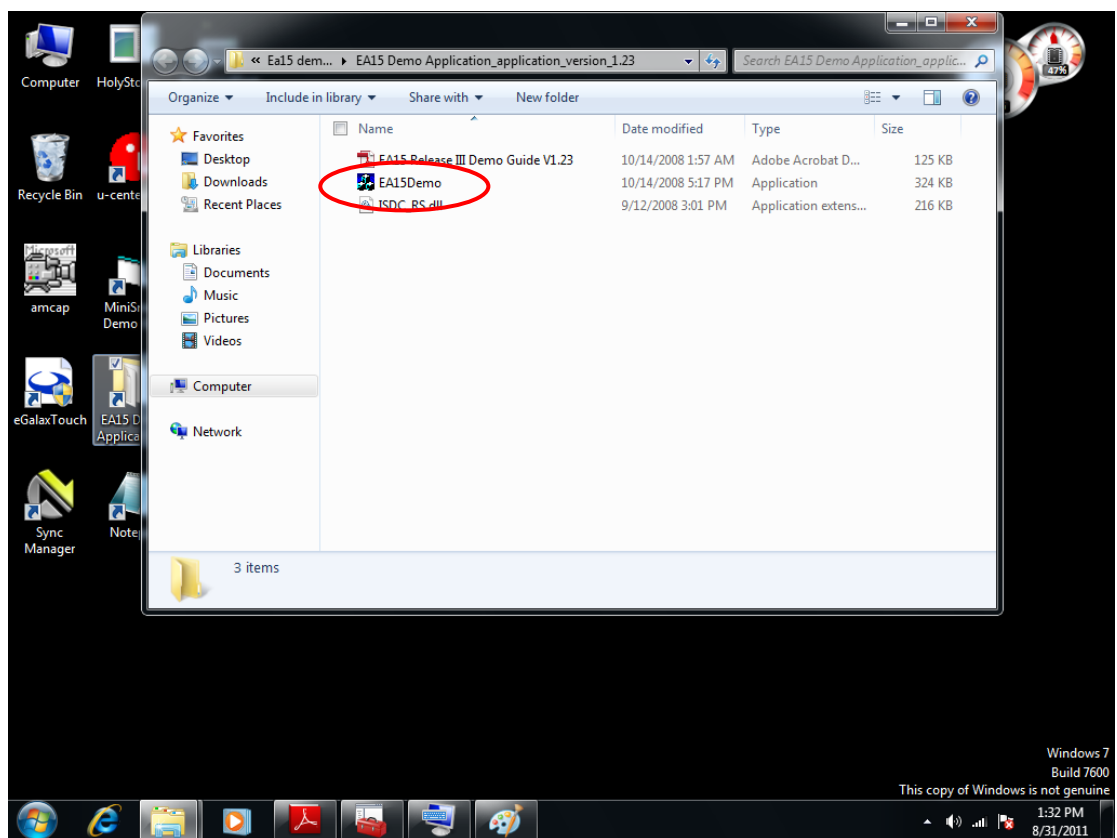


#### 4. The Bar code Scanner Operate

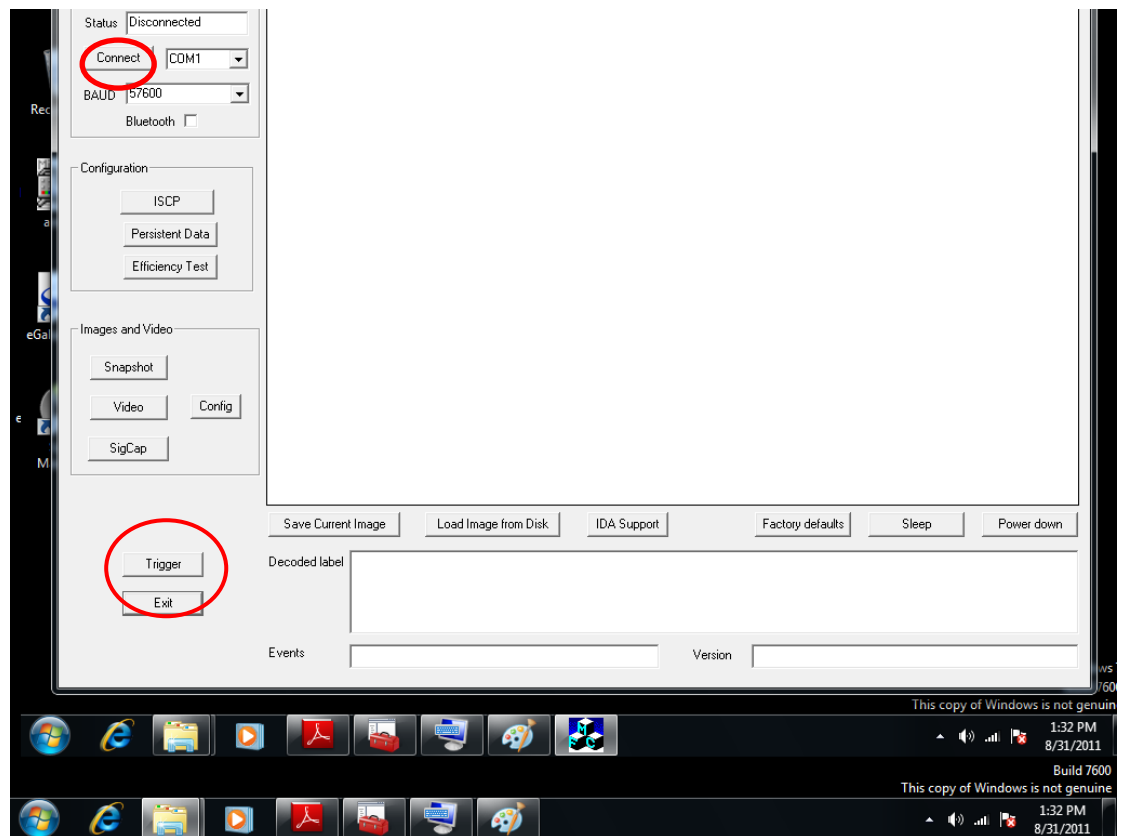
##### 4.1 Select the “ EA15 Demo ” icon as below shown ( Red circle)



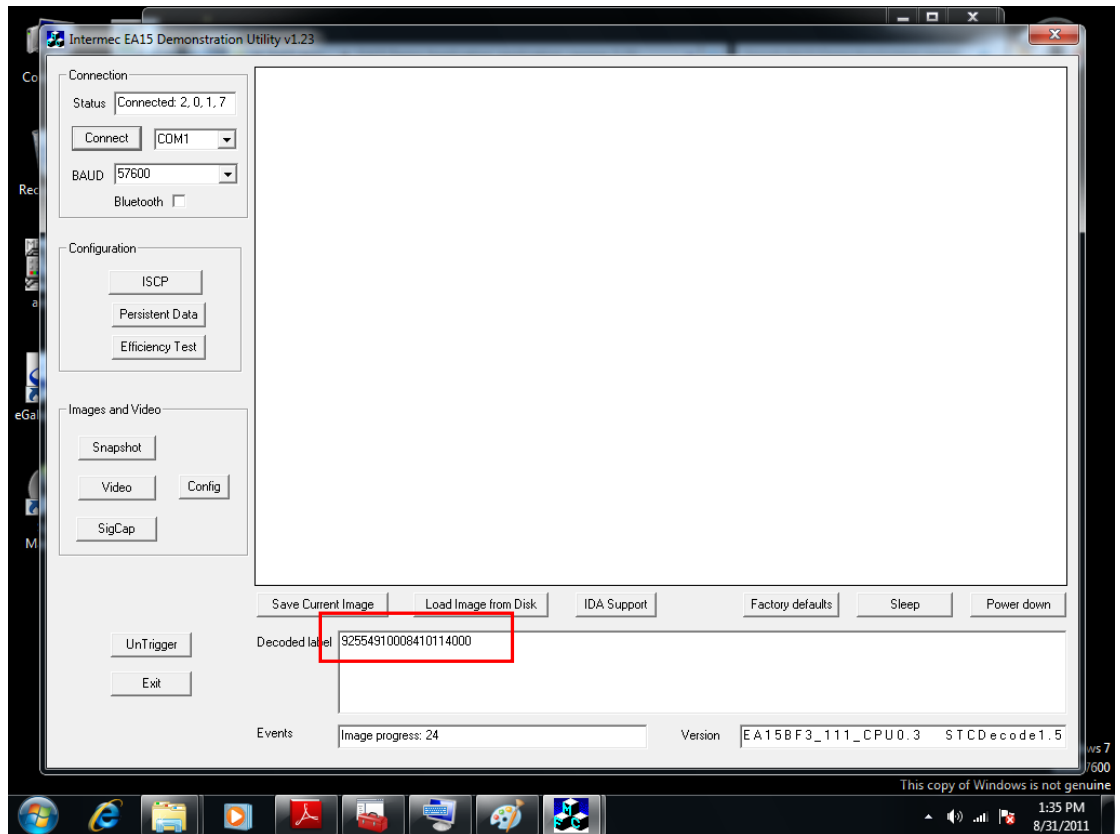
##### 4.2 Select the “ EAISDemo ”



4.3 To press the “ Connect “ Button and shall be showing the status information .

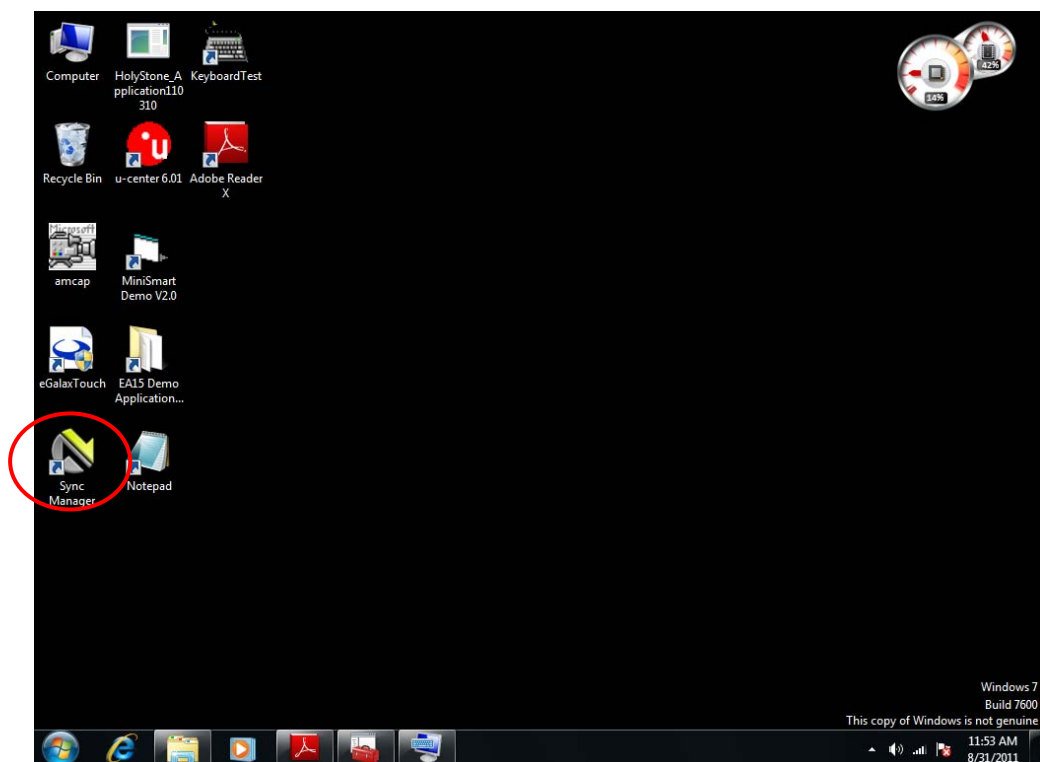


4.4 To Press the “ Trigger “ as the time Bar code scanner shall be operating ,  
Then Put the Bar code stick close to the scanner and was scanned.  
The data from the scanner shall be showing the “ Decoded Label” area.

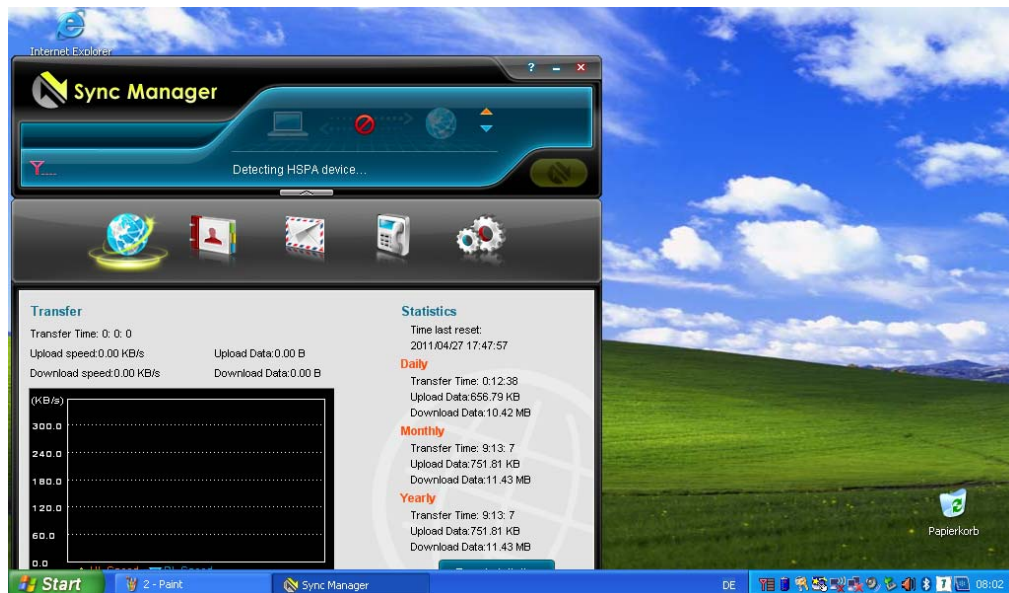


## 5. The 3G Communication Operate

### 5.1 Select the “Sync Manager” icon as below shown ( Red circle)



### 5.2 Detecting HSPA device



5.3 HSPA device is ready and press the “ Start “ icon as below shown.



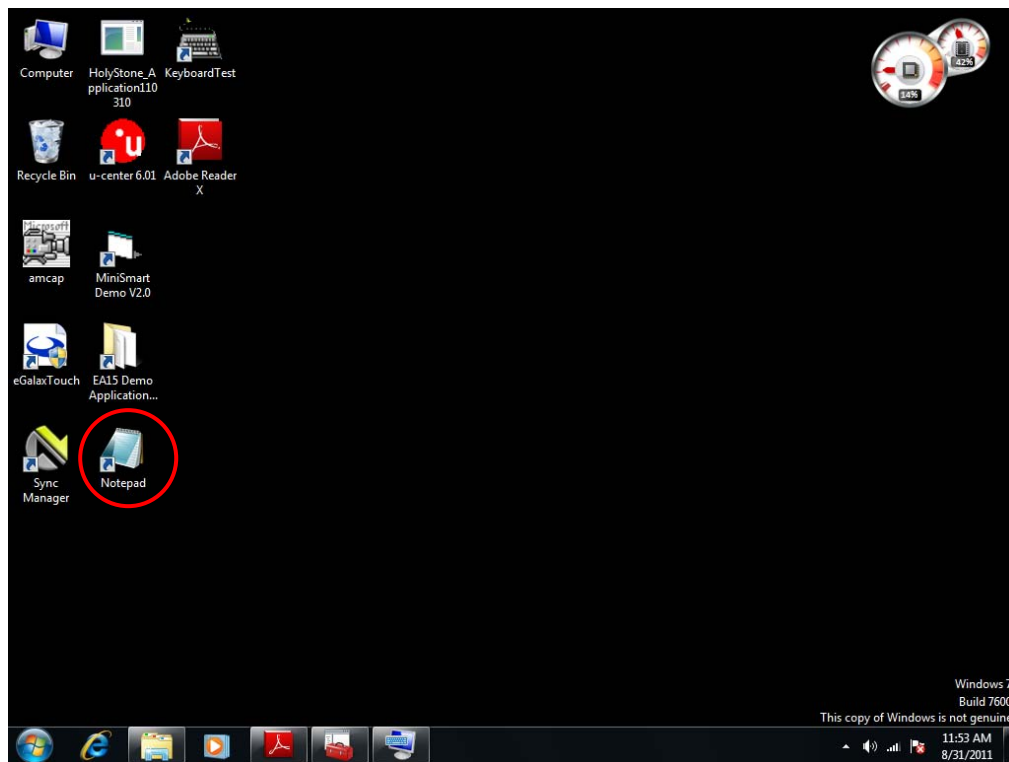
5.4 HSPA network is connected

Please to connecting the Internet.



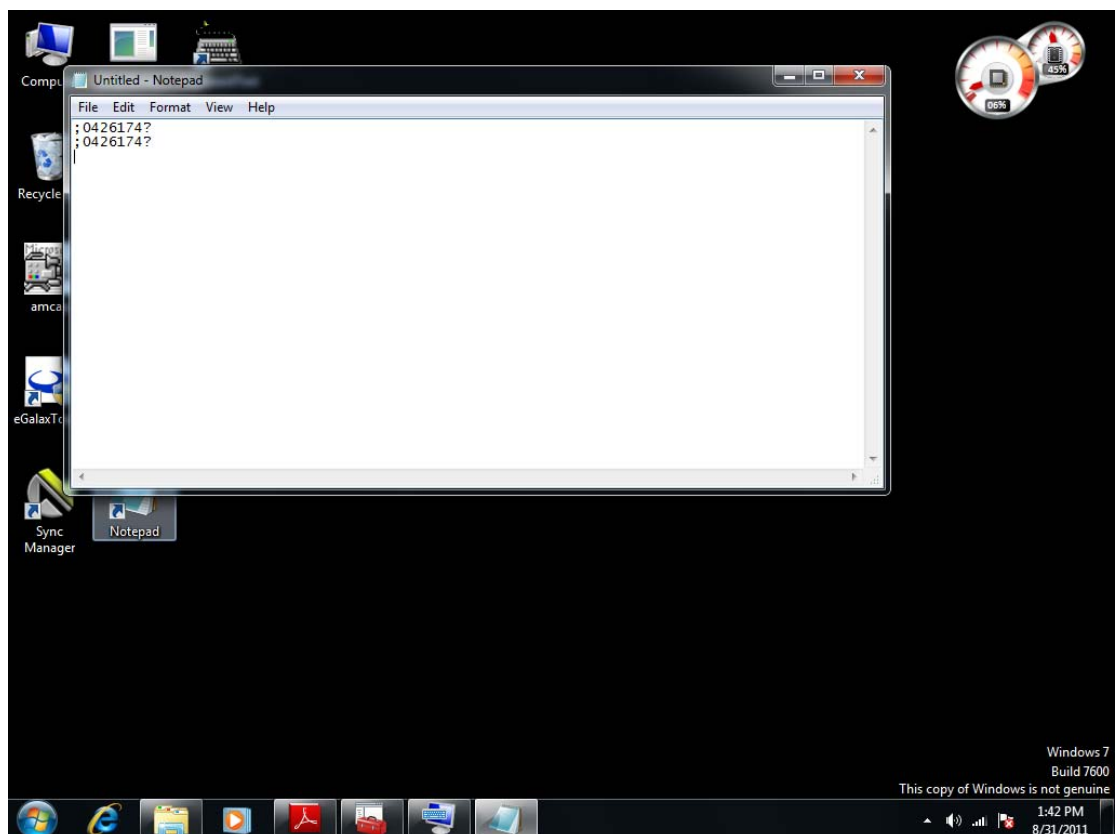
## 6. The MSR Function operate

### 6.1 Select the “ NotePad ” icon as below shown ( Red circle)



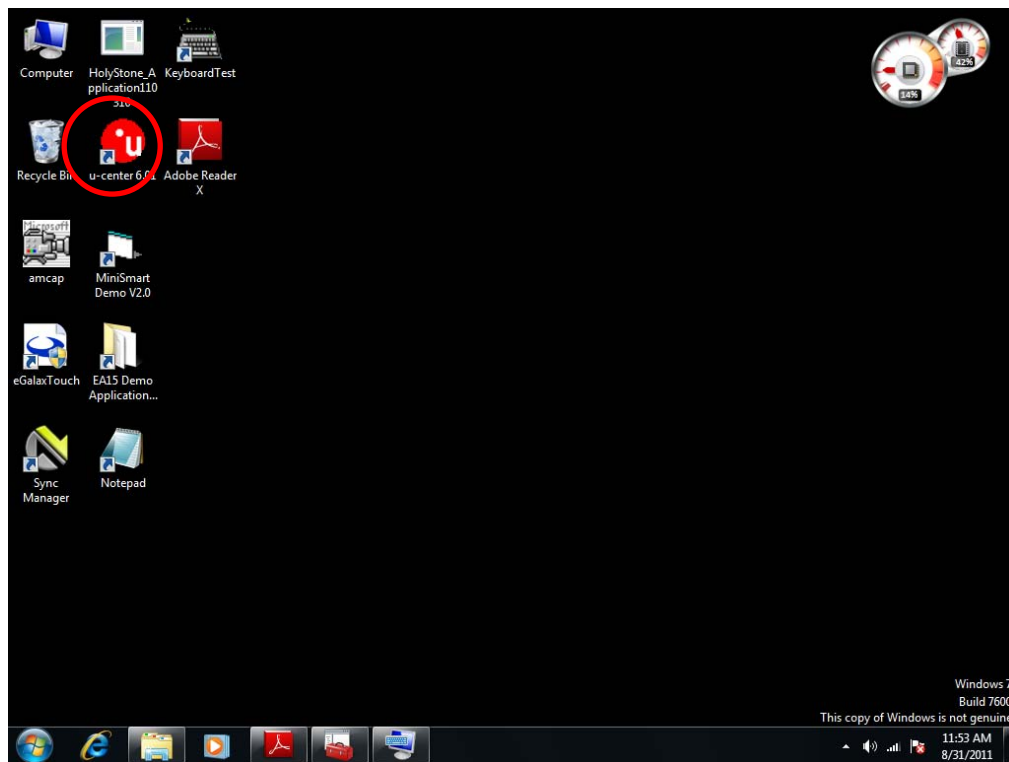
6.2 Put the Cash Card or ATM Card into the MSR device

The data will be showing on the screen.

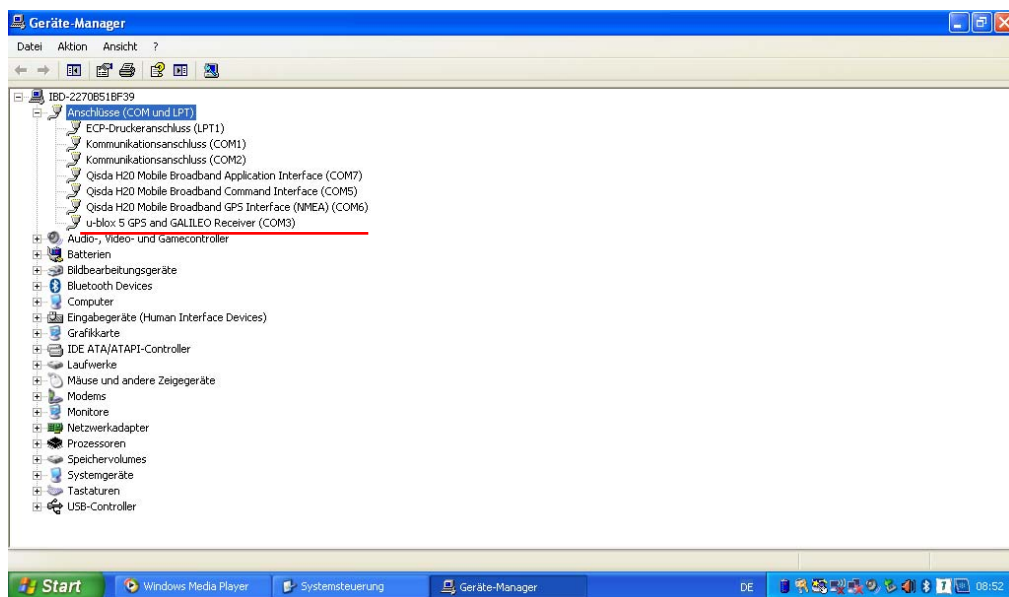


## 7. The GPS Function Operate

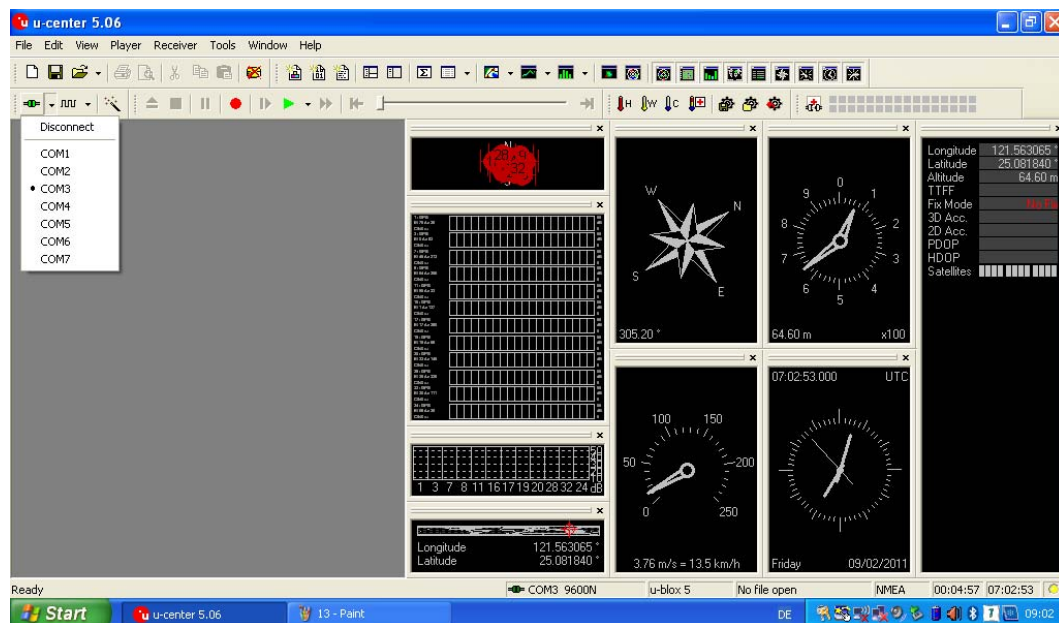
7.1 Select the “ U-center 6.01 ” icon as below shown ( Red circle)



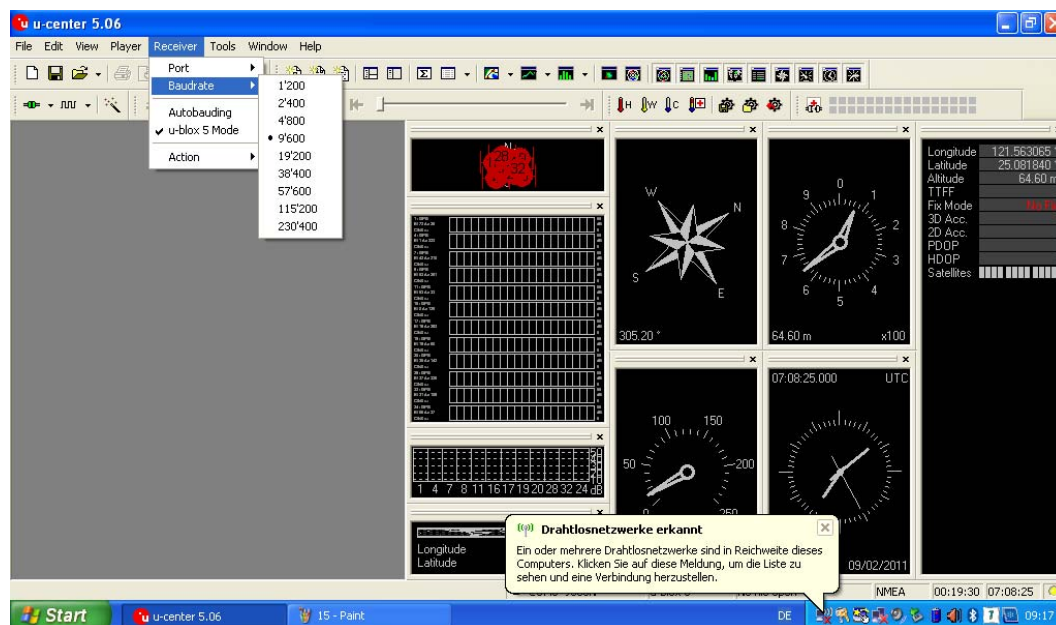
## 7.2 To Confirmed the GPS COM Port number at the Device Manager



## 7.3 To Choose the COM3



## 7.4 To Selected the Baud rate



## 7.5 To Received the Satellite Channel

