

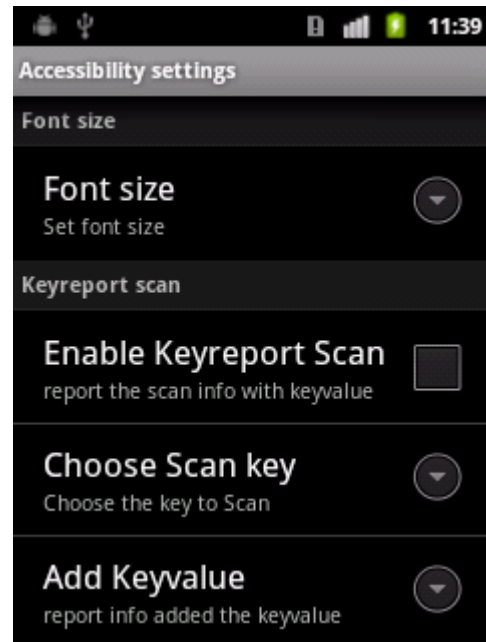
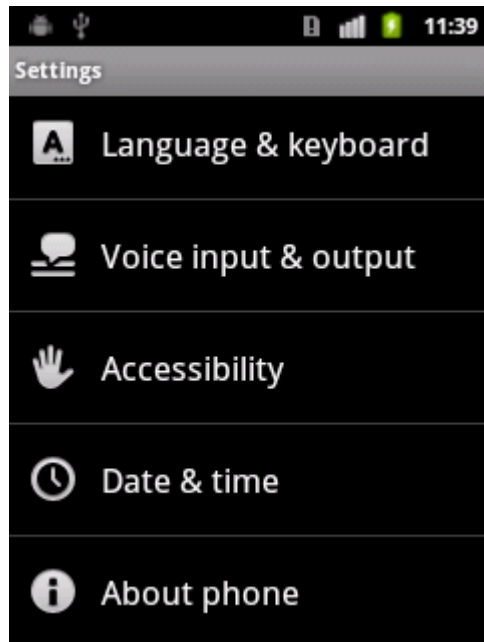
# Software Department Document

---

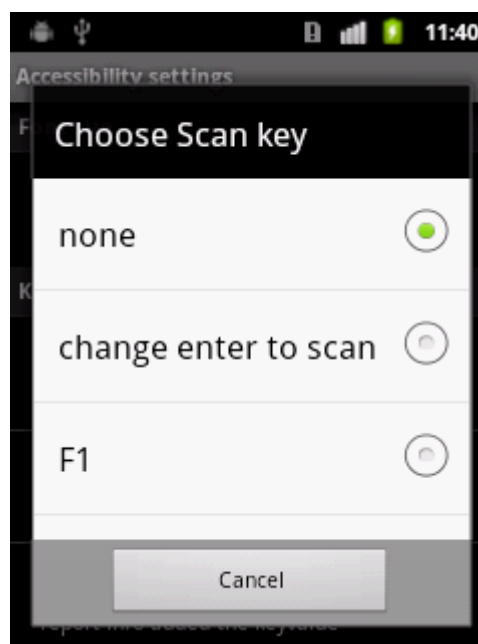
SE4500\_DEMO UserManual

Diao Xianhua  
4/15/2013

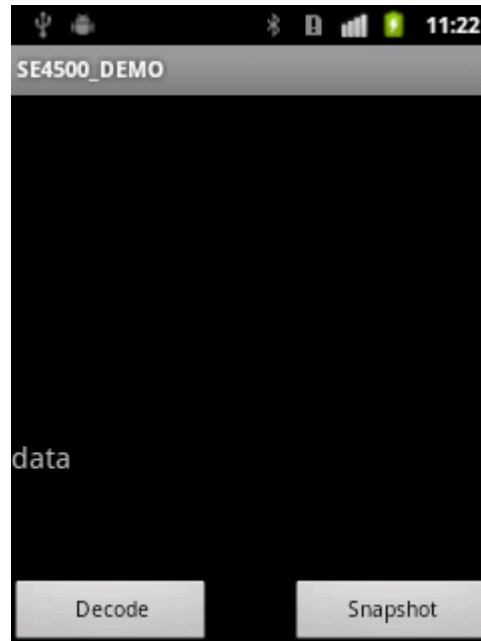
1. Use the demo please ensure “Settings”→”Accessibility”→”Enable Keyreport Scan” unchecked , i.e. **not open focus scanning**.



2. Click “Choose Scan key”, see as the picture. Choose “none”, then the orange key do only as enter key. Choose the “Change enter to scan”, then the orange key becomes a scan key and only do as scan key in demo. And the others like F1,F2 and F3 do only focus on the Focus Scanning while unrelated to specific demo.



3. install demo and click "SE4500\_DEMO" to open it, as shown below:



4. click "Decode", infrared light, alignment of qr code or barcode, then read data. If you choose "change enter to scan" in step two, you could use the orange key to do the same thing as clicke "Decode". Otherwise you need make the focus on the "Decode" by the next key, turn it to orange, then click the hareware orange key. You can scroll down to see as more info ,as picture:



5. Click the “Snapshot” button, to shoot, or if you do not choose “change enter to scan”, you can click orange hardware key after set focus on the “Snapshot” by the next key.as picture:

