

# Assembly Guide for DE67-HA ODD



V1.0

2011/10/03

# 1.Outlook

## Front IO



Front USB

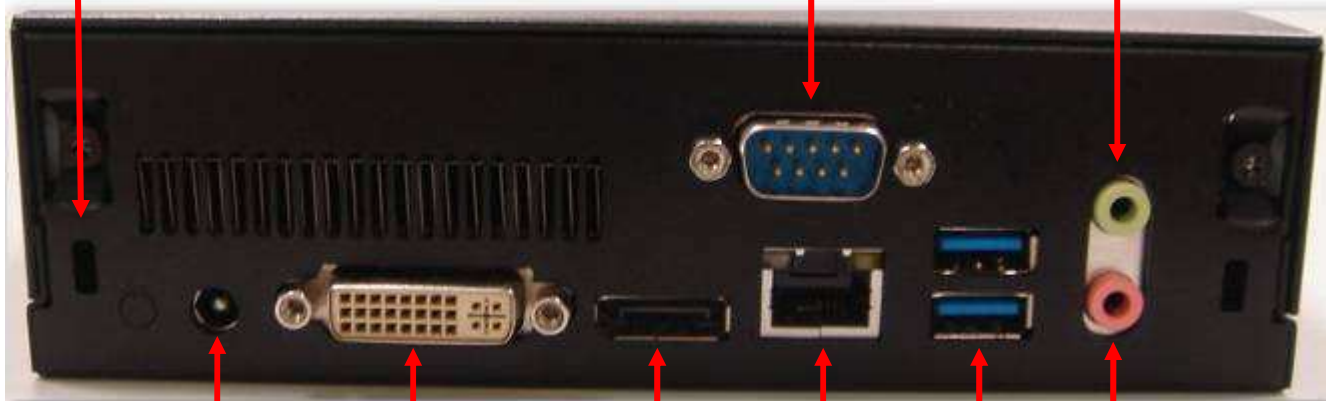
Power Button

## Rear IO

Kensington  
Lock hold

Com Port

Line out



DC 20v/12v

DVI

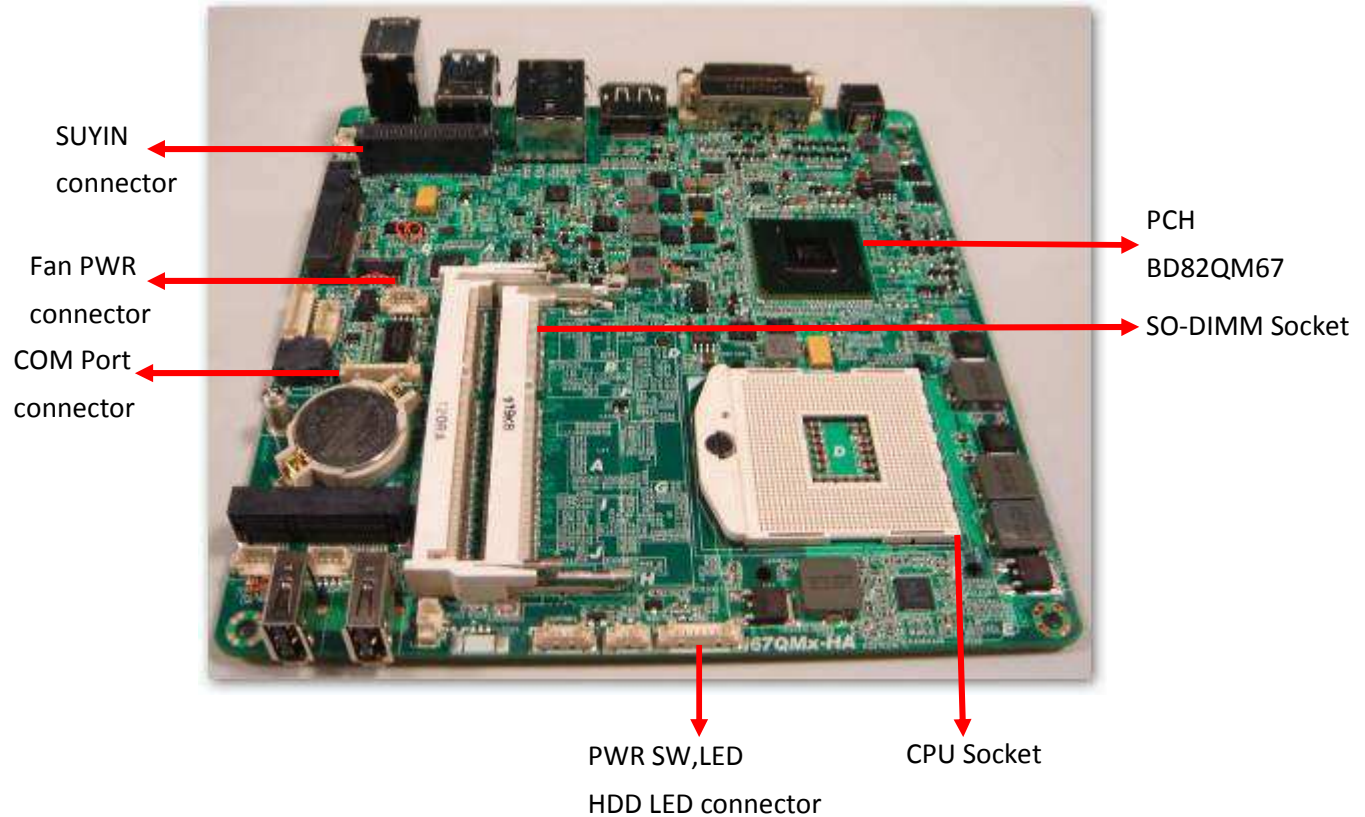
HDMI

LNA

USB 3.0

Mic in

## Internal Connectors



# 1. Assembly Guide

## 1. Open Housing

### 1-1.

Detach 2 pcs of the rear side screw ( FPH M3 screw ) by the electric screw driver .  
(Screwdriver torque :  $5.0 \pm 0.2$  kgf. cm ).



### 1-2.

Push the Upper case to remove it .

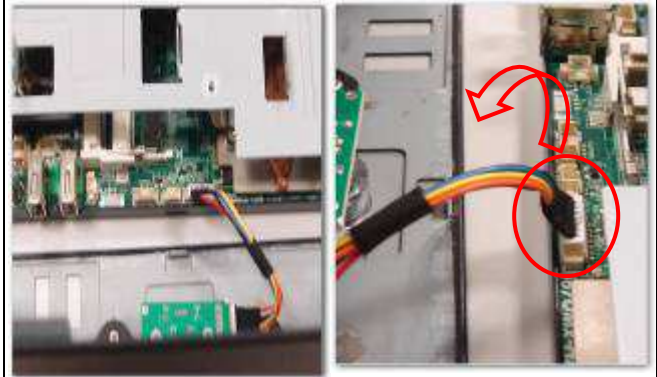
**Front Side**



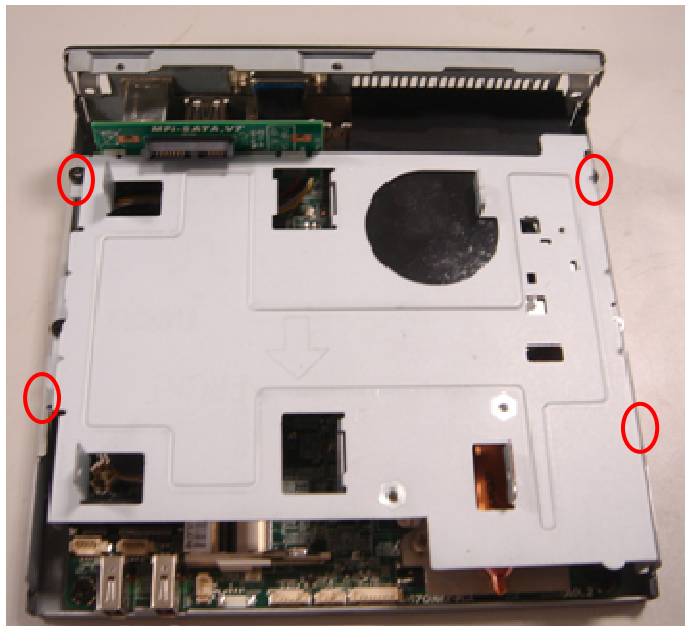
**1-3.** Open the top cover



**1-4.** Connect the wire unplug



**1-5.** Detach 4 pcs of the supporter screw by the screwdriver



**1-6.** Remove Supporter





1-7. You will see the kernel of Digital Engine and supporter

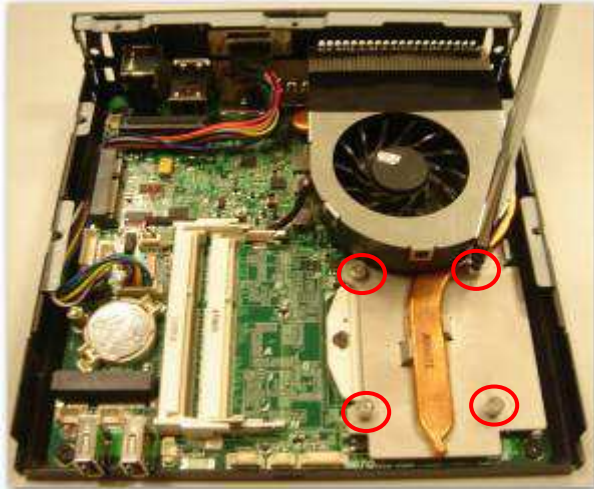




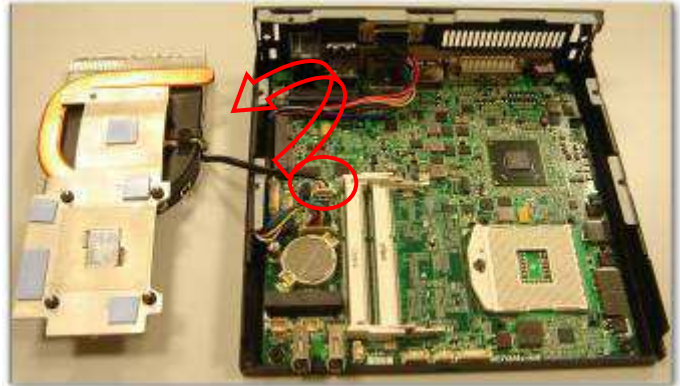
## 2. Install Key components

### 2-1 Install CPU and Memory

2-1-1 Remove the CPU cooler, Loosen 4 screw and remove CPU cooler

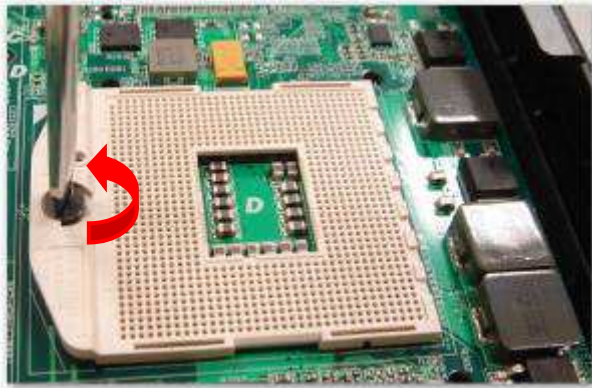


2-1-2 Remove the cooling fan modules and remove the power cord from MB



### **2-1-3** CPU socket unlock

Use the slotted(-) screwdriver to turn CPU socket screw toward the unlock mark (anticlockwise direction)



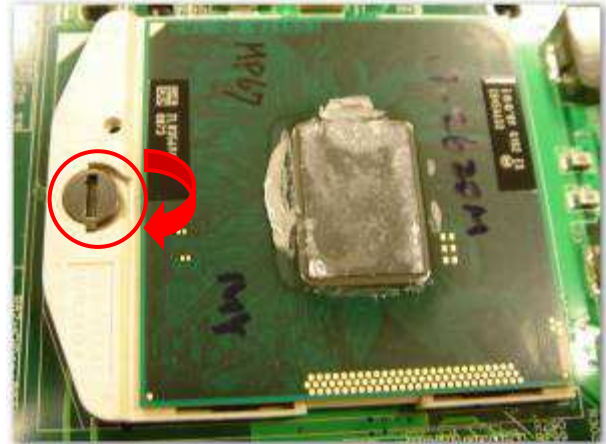
#### **2-1-4** CPU installation

Locate CPU Pin1 in the socket and look for a golden arrow on CPU upper interface. Then insert the CPU into socket.



#### **2-1-5** CPU socket lock

Use the slotted(-) screwdriver to turn CPU socket screw toward the lock mark (clockwise direction).



## 3. Install Key components

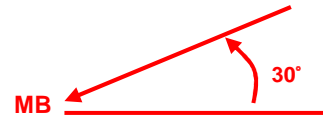
### 3-1 Install Memory

#### 3-1-1.

Insert the memory on the socket as this angle.



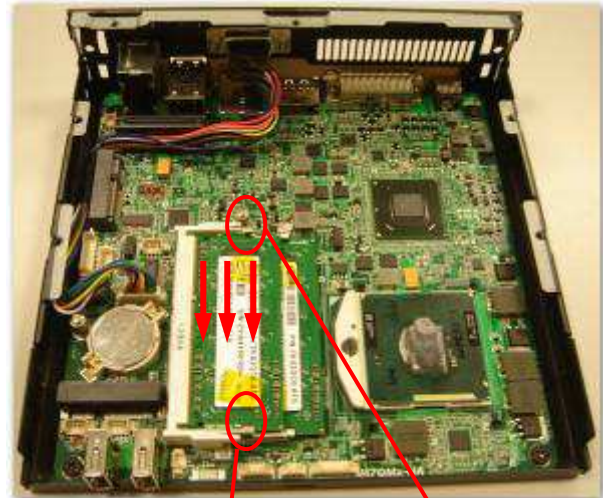
Insert DIMM as this angle



### 2-1-2.

Then press the DIMM as flat on the Motherboard, and you will hear the click voice.

**Remarks** : Install one DIMM ,Please install above slots



**Make sure it clicks**

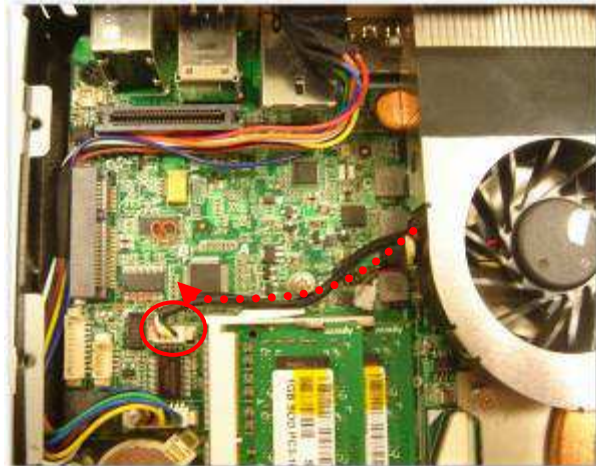
### 3. Install Key components

#### 4-1 Install Cooling fan modules

4-1-1. Follow the sequence is screw 1-2-3-4 of CPU cooler to tighten the 4 screws and make sure the CPU cooler is fastened to the MB



4-1-2. The fan power cord plugged MB, Make sure the direction of fan cable accord the photo





## 4. Install Key components

### 4-1 Install HDD and ODD on Supporter

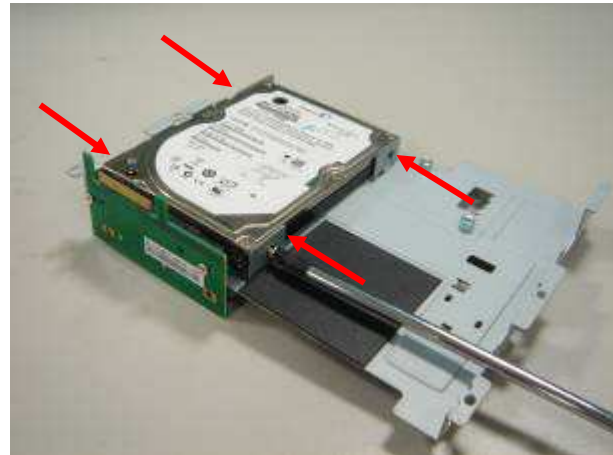
#### 4-1-1. Put the HDD on support

Please pay attention to the direction of SATA  
HDD



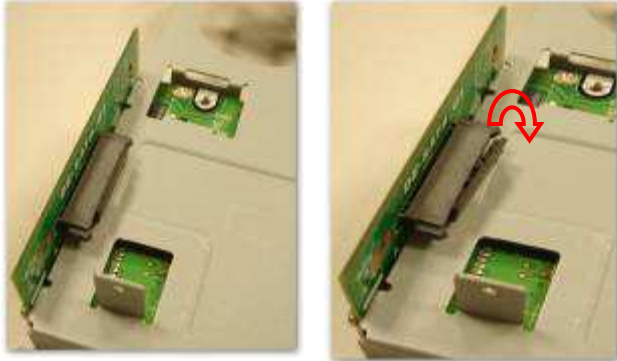
#### 4-1-2. and screw HDD with 4pcs of FPH M3 screw (on both flanks)

(Screwdriver torque :  $2.5 \pm 0.1$  kgf. cm )





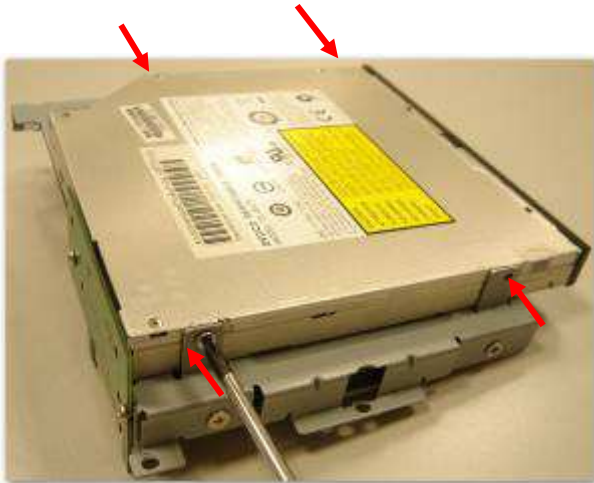
**4-1-3.** Riser card for SATA ODD to piece removing files



**4-1-4.** Put the ODD on support  
Please pay attention to the direction of SATA ODD



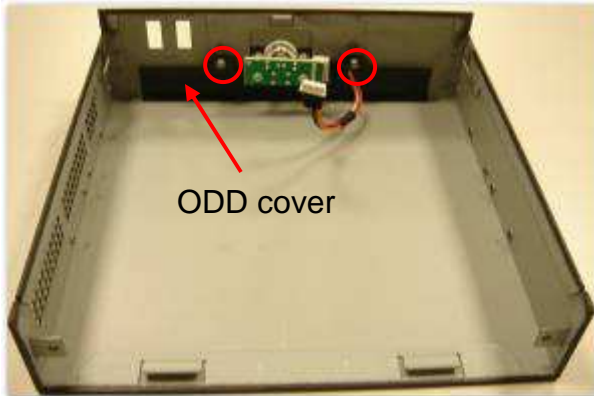
**4-1-5.** and screw HDD with 4pcs of FPH M2 screw (on both flanks)  
(Screwdriver torque :  $2.5 \pm 0.1$  kgf. cm )



## 5-1

### 5-1-1 ODD installation

Before install ODD, please remove the ODD cover of front panel first, Remove screws of front panel Use Phillips(+) screwdriver to remove the screw of front panel



### 5-1-2 Remove ODD Cover



**5-1-3** Connect the wire plug.



**5-1-4** Assemble Supporter

Press the Supporter to fit the golden finger of DE-SATA card into the connector and make assemble tightly.



### **5-1-5** Assemble Supporter

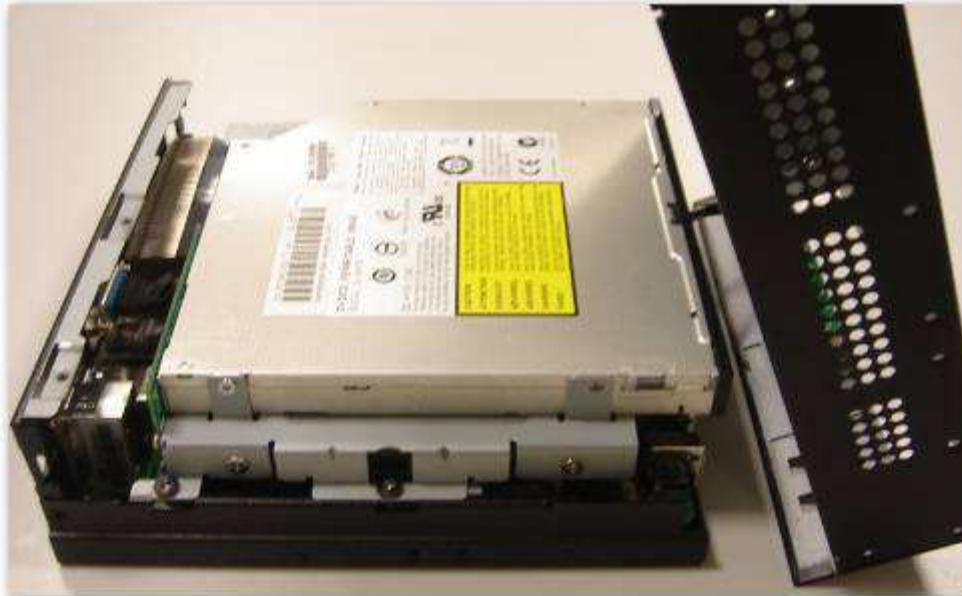
Tighten 4 pcs of M3 screws. The operation sequence is screw 1-2-3-4

..



## 5 .Top Cover and cable management assembly

### 5-1 Screw the upper case



Assemble top cover as this angle

Noumenon



**5-1-2** Assemble Top case accord the photo



**5-1-3** Assemble Top case accord the photo










**5-1-4** Screw 2pcs of M3 screw at rear side  
(Screwdriver torque :  $5.0 \pm 0.2$  kgf. cm )



## 2. Table of Screw and Torque

No.	Screw Photo	Position	Q'ty	Screw spec.	Torque	Screw driver spec.
1		Rear side	2	FPH M3- L5	5±0. 2 kgf-cm	⊕ Phillips #2
2		HDD Front Panel	4	FPH M3- L4	2.5±0. 2 kgf-cm	⊕ Phillips #1
3		Supporter	4	FPH M3- L5	5±0. 2 kgf-cm	⊕ Phillips #2
4		MPI-SATA card	2	FPH M2.5- L4	0.7±0. 1 kgf-cm	⊕ Phillips #1
5		Slim ODD	4	FPH M2- L3	0.7±0. 1 kgf-cm	⊕ Phillips #1